



Staff

- Georgia Allgier
Gallery Teacher
- Luke Dempsey
Exhibition Designer and Museum Technology Lead
- Linda Duke
Director
- Marvin Gould
Exhibition Designer
- Jennifer Harlan
Office and Events Assistant
- Theresa Marie Ketterer
Museum Registrar
- Robin Lonborg
Assistant Director of Operations
- Nate McClendon
Art Bridges Teaching Artist
- Jui Mhatre
Communications and Marketing Specialist
- Sarah Price
Collections Manager
- Kim Richards
Education Specialist
- Kathrine Walker Schlageck
Associate Curator of Education
- Martha Scott
Donor Relations Assistant
- Elizabeth Seaton
Curator
- Benjamin Shubert
Security Officer
- Lindsay Smith
Exhibition Designer and Museum Systems Lead
- Aileen June Wang
Curator

On the cover:

45 Paleolithic Handaxes, simulation. © 2019, Night Fire Films

FROM THE DIRECTOR



Photo by Aileen June Wang

This is the moment. The moment to ask where we are as a community and how art can help us imagine how to respond to our changing world. Several museum exhibitions this spring aim to inspire reflection on how humans have adapted to challenges over the ages.

45 Paleolithic Handaxes presents some of the oldest known human-made artifacts. Artist and filmmaker David Lebrun powerfully evokes

their presence using mesmerizing animation and a sound score by Yuval Ron. The exhibition prompts compelling questions. What was human life like 600,000 years ago? Did early humans perceive beauty in the objects they created?

Thousands of centuries later, Kansas artist John Steuart Curry pondered the beauty and meaning of a sunrise over the prairie in a series of 1930s and early 1940s works, including the museum's featured painting *Sunrise over Kansas*. The sun's light is difficult to capture, especially when it bursts over the horizon. As it rises, it becomes too bright to look at. Why did Curry persist in attempting to render this natural phenomenon? What does a sunrise mean in our own lives?

Gordon Parks famously declared the camera to be his "choice of weapon" in his effort to make our society more just and compassionate. In *Homeward to the Prairie I Come* we see the ways Parks explored the human experience through photography and poetry. Parks passed away in 2006, but the questions he raised in his art continue to be relevant and to inspire.

Lastly, Manhattan, Kansas-based photographer Doug Barrett brings our attention to our own community. Life on Yuma Street. Social justice protests in Junction City. US military veterans now homeless. Using words and images in *Find Your Voice*, Barrett invites us to reflect on ourselves as we observe others. Can these images inspire in us a sense of caring and shared humanity?

To inspire wondering is a museum's highest calling. Please come and wonder with us.



Linda Duke, Director

Rebecca Alston, *Bar Frequency* >
Generator Creating Tone Color (detail),
20th century, screenprint on paper,
14 1/4 x 14 1/2 in., S4.2015

An inspiring fusion of visual and musical art forms

Gordon Parks has influenced countless artists to help us understand ourselves and our society in new, empowering ways. Three artists who revere Parks as a mentor will hold a public conversation at McCain Auditorium April 6 at 7 p.m. They are six-time Grammy-winning jazz musician and composer Terence Blanchard, University of Texas Dallas multimedia artist Andrew F. Scott, and Academy Award-winning screenwriter and filmmaker Kevin Willmott. Each has a vision for how the arts can function as a tool for making our society more just and equitable.

Since last fall Andrew F. Scott has been working with a group of K-State students under the direction of Art Department head Matthew Gaynor on a unique digital stage set for Blanchard and his band, the E-Collective. The band will perform at McCain Thursday, April 7, at 7:30 p.m. Both evenings are free, but tickets are required for admission to the April 7 concert.



^
Andrew F. Scott
Photo by Sarah N. Wall



^
Terence Blanchard
Photo by Daymon Gardner



< **Kevin Willmott**
Photo by Kacy Meinecke

VIRTUAL OFFERINGS
#BeachMuseumFromHome

Enjoy our interactive tools and platforms for adults, children and families. For a guide to these online resources, visit beach.k-state.edu/explore.

Smartify

This free app identifies 2D and 3D artworks in the museum and instantly returns text, audio and video interpretation. Download Smartify free today for Apple and Android devices from the Apple Store or Google Play Store. To use from home, click on the Explore tool to search for the museum and its gallery offerings and gain access to works in other museums. Take advantage of the app's personal gallery-making tool.

Virtual Exhibitions

Enjoy ways to explore the museum's exhibitions online:

- *Gordon Parks: "Homeward to the Prairie I Come"* (also on view in the Marion Pelton Gallery)
- *Doug Barrett: Find Your Voice* (also on view in the Archie & Dorothy Hyle Family Gallery)
- *Sunrise over Kansas: John Steuart Curry* (also on view in the Mary Holton Seaton East Gallery)
- *Waylande Gregory: Art Deco Ceramics and the Atomic Impulse*

eMuseum

Explore the museum's art collection of over 10,000 objects for research or enjoyment with the new online collection search tool. Visit beach.k-state.edu/explore/collection

BMA YouTube Channel

Find videos of art, artist interviews and special programs including the museum's virtual program series Let's Talk Art and Art Bytes, "Hear What I'm Seeing?" videocasts and more! Please subscribe to our channel, visit beach.k-state.edu/videos

EXHIBITIONS

Educational Resources

Available for schools, early childhood programs, social service organizations and homeschool groups. Visit beach.k-state.edu/participate/educational-resources

Social Media

Enjoy and share fun interactive posts about regional art and artists and know about the museum's activities.

Facebook: [BeachMuseumofArt](https://www.facebook.com/BeachMuseumofArt)
 Instagram: [beachmuseum](https://www.instagram.com/beachmuseum)
 Twitter: [@BeachMuseum](https://twitter.com/BeachMuseum)

Beach Buddies Facebook Group

Find resources and activities for children, families and educators, including ARTSmart classes. Join through the museum's Facebook page or visit [facebook.com/groups/bmabuddies](https://www.facebook.com/groups/bmabuddies)

John Frederick Helm, Jr., *Indian Harbor* (detail), ca. 1955, opaque watercolor, 14 11/16 x 20 11/16 in., 2019.110

Salt Air

Virtual exhibition launch: June 1, 2022

Donna Lindsay Vanier Gallery: March 15 – October 1, 2022

Visit the beach from the Beach! Organized in conjunction with the American Library Association's 2022 summer reading theme "Oceans of Possibility," this exhibition features waves, shorelines, sand dunes and sea creatures pictured in museum artworks.

The sea shore offers artists exciting contrasts. Crashing waves batter smooth sands. Warm-toned beaches meet icy green and blue waters. Winds create foamy white caps that break up glassy seas.

The exhibition itself will present intriguing contrasts, such as the pairing of Jerod Morris' ceramic sculpture *Wave* with a more traditional seascape by Jeff Aeling. A ceramic cup by Virginia Cartwright mimics wind patterns in sand and complements paintings of dunes by Raymond Eastwood and Roy Langford.

Like the prairie, the sea offers large vistas and dramatic horizon lines, but several of the artists in this exhibition have chosen unique perspectives. More abstract views of the ocean define the work of Scottish artist William (Bill) James John Brown and French and Mexican artist Pedro Pablo Preux. Former Manhattanite Lydia Asenata's *Under the Sea* and Diane Balsley's *Tropiquarical* take the viewer under the waves.

This exhibition will set the theme for the museum's weekly summer art programs, tours and gallery activities. It might also provide a spring break getaway in Manhattan!



William (Bill) James John Brown, *Waves*, 1999, earthenware and underglaze print, 13 x 13 x 2 in., gift of the artist, 2015.114

Prairie Views

Mary Holton Seaton Gallery East: April 5 – December 15, 2022

"I had always thought of the American prairie as an unexciting large chunk of empty space; an underdog landscape. At best, it has been taken for granted. The prairie is my theater, my stage, my drama."

—Patricia DuBose Duncan

This exhibition gives voice to the prairie and provides opportunities for all ages to discover its form and beauty through the lens of Kansas artists. The exhibition complements the nearby outdoor Meadow as well as art displayed in other galleries, including Jim Richardson's photographs of prairie root systems and Patricia Duncan's *Red Prairie and Bison* painting.

Highlights include a delicate watercolor depicting the Kansas prairie, and *Dancing on Table*, a collage by Lynn Benson that alludes to the vulnerability of the Ogallala aquifer, often described as the life of the prairie ecosystem. Also featured is *Prairie Fire near Cottonwood Falls, Kansas, 1997* by photographer Larry Schwarm,

author of the book *On Fire* (2003).

This exhibition will serve as the basis of the Picturing Kansas school tour, "Roots to Sky." The exhibition is also tied to K-State's Prairie Studies Initiative, a collaborative project involving K-State faculty, staff, students and community members. The initiative's aim is to cultivate understanding of the natural ecosystems, history, culture, and livelihoods of the prairie, and to employ the arts to make these explorations meaningful to the public.

—Cassie Wefald, education intern/co-curator

Gold Sponsors: Chuck and Sandy Bussing
 Silver Sponsors: David and Judy Regehr
 Bronze Sponsors: Mary Helm Pollack and Larry Pollack

Joan Foth, untitled (Kansas landscape), 1978, watercolor with graphite on paper, each of two images: 8 1/2 x 11 1/4 in., gift of Don Lambert, 1997.10





^ Gordon Parks's camera and lens displayed in the exhibition and loaned by The Gordon Parks Museum at Fort Scott Community College, Fort Scott, Kansas.

Gordon Parks: "Homeward to the Prairie I Come"

Virtual exhibition at beach.k-state.edu/explore
 Marion Pelton Gallery: September 7, 2021 – May 28, 2022

This exhibition features a collection of photographs that Kansas native Gordon Parks curated and donated to K-State in 1973 and offers insights into the ideas they convey. Also on display are a select group of photographs made by Parks during two artist residences in Manhattan, Kansas, in the 1980s. "Homeward to the prairie I come" is the first line of a poem by Parks, one of the works of poetry and photography commissioned by the *Manhattan Mercury* newspaper to commemorate its centennial.

The exhibition is part of a Gordon Parks project initiated by the Beach Museum of Art and K-State English. The department has built a website, *The Learning Tree: A Gordon Parks Digital Archive*, as a partner exhibition. It offers a selection of archival materials and oral histories about the filming of *The Learning Tree* in Parks' birthplace of Fort Scott, Kansas.

The collaboration won a National Endowment for the Humanities Public Humanities Projects award in 2021.

Platinum Major Sponsors: Art Bridges, The Alms Group, Beach-Edwards Family Foundation, Friends of the Beach Museum of Art, Greater Manhattan Community Foundation's Lincoln & Dorothy Diehl Community Grants Program, Weary Family Foundation
 Silver Sponsors: Donald J. Mrozek and R. Scott Dorman
 Bronze Sponsors: Tom Folk and Frank Brady and Chuck and Sandy Bussing

Related events

Let's Talk Art: Considering the Dance Film *Martin* by Gordon Parks
 Thursday, January 27, 5:30 p.m.
 Livestream Conversation

Curator Aileen June Wang and Theresa Ruth Howard, ballet dancer and founder-curator of MoBBallet.org (Memoirs of Blacks in Ballet) discuss Parks's 1990 ballet film *Martin* created to honor Martin Luther King, Jr. This is part 2 of a program organized jointly with the Gordon Parks Museum at Fort Scott Community College (FSCC). Audiences can see the ballet film in person at FSCC's Ellis Fine Arts Center Theater Monday, January 17 at 1:30 pm. Check the Gordon Parks Museum website for details

Considering Techniques: Jim Richardson on Gordon Parks
 Thursday, February 24, 5:30 p.m.
 Livestream gallery conversation



^ Gordon Parks, *Patrician: Comtesse Alain de la Falaise*, noted in Parisian society for her slim figure, patronizes Schiaparelli. Here she wears exotic cotton evening dress reminiscent of styles in the late 20s (Maxime de la Falaise), from the series *Paris Fashions*, 1949, printed in 2017, gelatin silver print, gift of Gordon Parks and the Gordon Parks Foundation, 2017.362
 Gordon Parks images courtesy of and copyright The Gordon Parks Foundation

McCain Auditorium | Free admission

Art Matters Now: Three Artists Reflect

Wednesday, April 6, 7 p.m.

Terence Blanchard, Andrew F. Scott and Kevin Willmott
 Free, no ticket required.

Presence of Absence: Gordon Parks Through an Empathic Lens

Thursday, April 7, 7:30 p.m.

Six-time Grammy winner Terence Blanchard and the E-Collective in Concert, with staging by K-State students under the direction of Andrew F. Scott and Mathew Gaynor.

Tickets are free but required. Obtain tickets at McCain auditorium or online at mccain.k-state.edu.

Made possible with major support from the Gordon Parks Foundation, the Weary Family Foundation, the Dow Center for Multicultural and Community Studies and the Creativity Illuminated Fund

Beach Film Club: Virtual Discussion of *Shaft* by Gordon Parks

Wednesday, April 13, 2022, 7 p.m.

Doug Barrett: Find Your Voice

Virtual exhibition at beach.k-state.edu/explore

Archie & Dorothy Hyle Family Gallery: September 7, 2021 – May 28, 2022

Manhattan, Kansas, artist Doug Barrett worked as a police officer and a soldier in the US Army before pivoting to a career in photography and videography. His experiences inform the photographic series featured in this exhibition, *Homeless Veterans Project*, *Yuma Street* and *George Floyd Protest*. In the works, and accompanying texts, Barrett gives voice to people who exist on the margins of society and to African Americans misunderstood and stereotyped. As a companion to *Gordon Parks: "Homeward to the Prairie I Come,"* Barrett's first museum exhibition shows how the spirit of Parks and his art lives on in succeeding generations.

Platinum Major Sponsors: Art Bridges, Beach-Edwards Family Foundation, Greater Manhattan Community Foundation's Lincoln & Dorothy Diehl Community Grants Program
 Silver Sponsors: Terry and Tara Cupps
 Bronze Sponsor: Dow Center for Multicultural and Community Studies



< Doug Barrett, *Leo*, from the series *Homeless Veteran Project*, 2018, inkjet print, 30 x 20 in., 2020.11

Doug Barrett, *Lazone Grays*, from the series *Yuma Street*, 2020, inkjet print, 20 x 30 in., 2020.14



45 Paleolithic Handaxes from Transfigurations: Reanimating the Past | David Lebrun

Ruth Ann Wefald Gallery: September 21, 2021 – July 16, 2022

This video installation features ancient stone artifacts in a powerful way through a unique combination of high-resolution photography, animation and evocative sound score. Artist David Lebrun has spent decades working with archaeologists and anthropologists to identify and photograph iconic, human-made objects from four regions: Mesoamerica, Europe, the Mediterranean and South Asia. This installation and another designed for the 2022-2023 season representing ancient Mesoamerica will provide a substantial introduction to the artist's massive, long-term project, *Transfigurations: Reanimating the Past*. An Exploration Station designed by the artist and his team installed outside the exhibition provides visitors with an array of information about each of the forty-five stone tools featured in the current installation. Enjoy the aesthetic beauty of the objects, learn more about them, and see the past differently!

Platinum Major Sponsors: Cytek Media Systems, Inc. and Weary Family Foundation
 Gold Sponsors: David and Mindy Weaver
 Silver Sponsors: Jerry and Barbara Boettcher
 Bronze Sponsors: Terry and Tara Cupps, Judy and David Regehr, Bill and Sharon Snyder

Top and Bottom Images: > Visitors engaged in the 45 Paleolithic Handaxes exhibition and the Exploration Station



Sunrise over Kansas: John Steuart Curry

Virtual exhibition at beach.k-state.edu/explore
 Mary Holton Seaton Gallery East: August 24, 2021 – February 28, 2022

Dramatic weather plays a significant role in Regionalist John Steuart Curry's art and often serves as a symbol of struggle or tragedy. Less recognized are the meanings carried by the artist's depictions of sunrises. The morning motif can stand in for poetic ideals, positive historical change, and even the artist's own optimism.

This exhibition of Curry paintings, drawings, prints and book illustrations explores the significance of the emerging sun in the Kansas native's work. The exhibition pays special tribute to the artist's 1935 painting *Sunrise over Kansas*, a view of the Gypsum Hills in Barber County. Because of distracting discoloration of the sun—caused by Curry's mid-1930s experiments mixing natural resins and oil-based materials—the painting has not been on display for many years.

A video about the conservation of *Sunrise over Kansas* accompanies the online version of the exhibition. Art



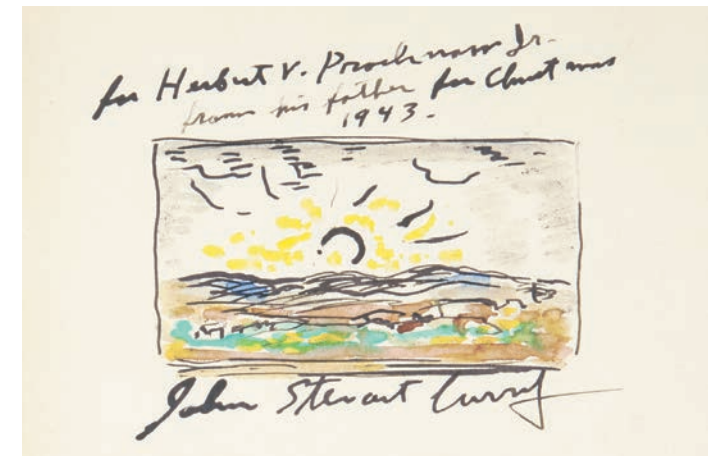
John Steuart Curry, *Sunrise (Sunrise over Kansas)*, 1935, mixed-media on canvas, 38 x 59 1/2 in., Friends of the Beach Museum of Art purchase, 1996.18

conservator Kenneth Bé of the Gerald R. Ford Conservation Center in Omaha, Nebraska, has served as consultant to the exhibition, which has been developed by Curator Elizabeth Seaton with assistance from student curatorial assistant Abby Lynn.

Platinum Major Sponsors: The Alms Group and Dan and Beth Bird
 Gold Sponsor: Archie R. and Dorothy E. Hyle Family
 Bronze Sponsor: Mary Cottom

Related events

"Kansas Weather in Life, Literature and Photography"
 Humanities Kansas Lecture
Thursday, February 17, 5:30 p.m.
 In-person talk by Kansas Poet Laureate Emeritus Caryn Mirriam-Goldberg



Curry occasionally drew a sunrise when signing the books he illustrated. Dedication to Herbert V. Prochnow Jr., ca. 1943, Walt Whitman, *Leaves of Grass* (Peter Pauper Press, 1943), 2018.247

CALENDAR



Annual Program Series | Spring 2022 Programs

A tribute to Marianna's love for lifelong learning

This public program series is as varied and colorful as the museum's exhibition cycle, which it complements. Marianna Kistler Beach believed in the value of art and the importance of cross-cultural understanding. The museum's staff is inspired by her work in these areas and offers the 2021-2022 Art in Motion programs in celebration of her leadership.

All events, which are free and open to the public, will be held in the museum's UMB Theater and/or virtually. Find more details and links to join virtual events at beach.k-state.edu/calendar. For in-person events requiring preregistration, call 785-532-7718 or email beachart@k-state.edu

Norman Akers photo by University of Kansas photo services >
Theresa Ruth Howard photo by Eva Harris
Jim Richardson photo by Kansas State University, Communications and Marketing
Neal Ambrose Smith photo by Lara Groff



Andrew F. Scott

Terence Blanchard



Kevin Willmott



Caryn Mirriam-Goldberg



Jim Richardson



Neal Ambrose Smith



Theresa Ruth Howard



Norman Akers

Thursday, January 27, 5:30 p.m.
Let's Talk Art: Considering the Dance Film *Martin* by Gordon Parks
Livestream Conversation
Curator Aileen June Wang and Theresa Ruth Howard, ballet dancer and founder-curator of MoBBallet.org (Memoirs of Blacks in Ballet) will discuss Parks's 1990 ballet film *Martin* created to honor Martin Luther King, Jr. The Gordon Parks Museum at Fort Scott Community College, Fort Scott will screen the film January 17 at 1:30 pm. Check the Gordon Parks Museum website for details.

Saturday, February 5, 11 a.m. – 12:30 p.m. or 1:30 – 3 p.m.
Family Valentine's Workshop
\$5 supply fee per participant, \$2.50 military families (cash or check). Reservations required

February 9 – 12, during museum open hours, virtually on Beach Buddies Facebook group
USD 383 Early Expressions Student Art Exhibition

Thursday, February 17, 5:30 p.m.
"Kansas Weather in Life, Literature and Photography"
Humanities Kansas Lecture
In-person talk by Kansas Poet Laureate Emeritus Caryn Mirriam-Goldberg

Thursday, February 24, 5:30 p.m.
Considering Techniques: Jim Richardson on Gordon Parks
Livestream gallery conversation

Thursday, March 3, 5:30 p.m.
Let's Talk Art: Indigenous Aesthetics
Livestream conversation
Guests: artists Neal Ambrose Smith and Norman Akers

Ambrose Smith is the creator of the 2021-2022 K-State Common Work of Art, *From Upstream I Caught a Fish*.

Joe DiGiorgio, *Kansas Wheatfield* (detail), 1971, oil on canvas, 72 1/2 x 293 3/4 in., gift of Helen DiLello and John DiLello, Jr., 2003.229

McCain Auditorium | Free admission
Wednesday, April 6, 7 p.m.
Art Matters Now: Three Artists Reflect
Terence Blanchard, Andrew F. Scott and Kevin Willmott

Free, no ticket required.

Thursday, April 7, 7:30 p.m.
Presence of Absence: Gordon Parks Through an Empathic Lens
Six-time Grammy winner Terence Blanchard and the E-Collective in Concert, with staging by K-State students under the direction of Andrew F. Scott and Mathew Gaynor.

Tickets are free but required. Obtain tickets at McCain auditorium or online at mccain.k-state.edu.

Made possible with major support from the Gordon Parks Foundation, the Weary Family Foundation, the Dow Center for Multicultural and Community Studies and the Creativity Illuminated Fund

Saturday, April 9, 9 a.m. – 4 p.m.
Beach Museum of Art 25th Anniversary Public Celebration and All-University Open House

Wednesday, April 13, 7 p.m.
BEACH FILM CLUB: Watch films in advance and then join the free virtual discussions.
Virtual discussion of *Shaft* by Gordon Parks

April 14 – 16, during museum open hours
Celebrating Art and the Young Child
Exhibition of art by students in USD 383 Early Learning and State Center for Child Development programs.

April 29 – 30, during museum open hours, virtually on Beach Buddies Facebook group
Arts and Social Justice Deep Dive Clubs exhibition

Art Bytes on the museum's social media
Monthly short videos about art in the museum's collection. Posts first Wednesday of the month

EDUCATION

ARTSmart Classes

Learn more about media while exploring the museum's collection. Each class includes looking activities and an art project. Classes are on the first Wednesday and Thursday of the month at 10:30 a.m. and 4:30 p.m.

Jan. 5 and 6: Clay Play

Feb. 2 and 3: Colorful Acrylics

March 2 and 3: 3-D Challenge

April 6 and 7: Fiery Collages

May 4 and 5: Watercolor Magic

Homeschool Tuesdays

Homeschool Tuesdays meet on the first Tuesday of the month and provide Homeschool families opportunities to explore the exhibitions and collection with curriculum integration. Tours are appropriate for those in Kindergarten on up and include an art project.

Jan. 4, 1-2:30 p.m.

Art and Science of Clay (Kansas symbol clay project)

Feb. 1, 1-2:30 p.m.

45 Paleolithic Handaxes (art and archaeology)

Mar. 1, 1-2:30 p.m.

Maps, Aerial Views and Art (collage project)

April 5, 1-2:30 p.m.

The Art of Light and Color (Pointillist/ Impressionist project)

May 3, 1-2:30 p.m.

Mexican Art for Cinco de Mayo (Allebrijes project)

Cost for each class is \$3 per child, \$1.50 for Blue Star/Military Families* (cash or check). Reservations required, call 785-532-7718 or email klwalk@ksu.edu. Children must be accompanied by an adult. If you need to cancel your reservation let us know so we can call those on the waiting list..

*** Special price for military families:** In conjunction with the Blue Star Museum program, the Beach Museum of Art offers military families half price on all workshops and classes!!

The museum follows K-State's COVID-19 guidelines for all programs. Current guidelines require masks in all public buildings.

Virtual Programs and Resources for Families and Teachers

Beach Buddies Facebook Group

facebook.com/groups/bmabuddies

Cool art, great books, fun activities, and more!

Curricula, including new materials for Art and Language Learning and resources for Kansas History Month

beach.k-state.edu/participate/educational-resources/



^ Young artists find inspiration from work in the museum.

FALL 2022 EXHIBITION PREVIEW

Art Bridges Foundation Loan Program
[details forthcoming]
September 6, 2022 – May 27, 2023

Voices: Women Artists in the Era of Second Wave Feminism
August 9, 2022 – December 16, 2023

The 24 Aspects of Vishnu
Transfigurations: Reanimating the Past
by David Lebrun
September 27, 2022 – May 27, 2023

Alice Baber (1928-1982), *The Golden River*, 1974, watercolor on paper, 30 1/2 x 22 1/4 in., 2017.562

SPONSOR SPOTLIGHT

The multimedia installation *45 Paleolithic Handaxes* is one component of artist and filmmaker David Lebrun's project *Transfigurations: Re-animating the Past*. Lebrun aspires to develop 100 similar animated explorations of ancient artifacts. The museum's installation, which offers a moving experience with video animation and sound, benefited significantly from the assistance of Cytek Media Systems, Inc. The Topeka-based company provides communication technology to Kansas State University, from smart classroom set-ups to digital signage.

Cytek Media Systems's sponsorship of the *45 Paleolithic Handaxes* took the form of equipment and technical help. The company provided cabling and tech design strategy for the complex features of Lebrun's artwork. Cytek Media Representative Chris Rigdon advised the museum's exhibition designers on equipment selection and led Cytek Media teammates in several arduous days of running cables and testing sound and video effects. Cytek Media owner Bill Jones has been a steady supporter of the museum's collaboration with David Lebrun and his team, even as the pandemic made it necessary to postpone and change their multimedia project. Thank you, Bill and Chris, and the Cytek team, for making this installation possible!



Photo by Kansas State University, Communications and Marketing

45 PALEOLITHIC HANDAXES

from **TRANSFIGURATIONS: REANIMATING THE PAST**

DAVID LEBRUN

DONOR IMPACT

The Beach Museum of Art is pleased to be partnering with The Alms Group, a Manhattan-based realty company with philanthropy for education at the heart of its mission. Managing Broker and Partner Cameron Ward oversaw deployment of the company's Matterport technology to create 3D tours of current exhibitions at the museum: *John Stuart Curry: Sunrise over Kansas*; *Doug Barrett: Find Your Voice*; and *Gordon Parks: "Homeward to the Prairie I Come"*. With the addition of these virtual tours, the online versions of these exhibitions provide a new level of engagement for viewers anywhere in the world.



Screen capture of the Gordon Parks exhibition virtual tour

Bernard Joseph Steffen, *Tree* (detail), ca. 1970, > screenprint, 18 x 24 in., gift of R. E. Hochberg, 2021.34

KUDOS AND UPDATES



Photo by Kansas State University, Communications and Marketing



Nate McClendon

Bridge Ahead Initiative award

The Beach Museum of Art has received a Bridge Ahead Initiative award from the Art Bridges Foundation to support the addition of a part-time teaching artist to assist with the *Gordon Parks: "Homeward to the Prairie I Come"* and *Doug Barrett: Find Your Voice* exhibitions. Musician and music educator Nate McClendon of Manhattan will lend his talents as a new member of the museum's team.

"The works by Gordon Parks and Doug Barrett demonstrate how art can engender social awareness and empathy," says Linda Duke. "As the Art Bridges teaching artist, Nate is focused on engaging audiences with the potential of these timely exhibitions to help all of us understand the challenges that face our society and conceive ways to make it more just, inclusive, and compassionate. Nate's artistry as a musician and his gifts as a teacher enable him to be an ambassador, mentor and exemplar of the ways the arts can open minds."

Earlier this year the Beach Museum of Art became a member of a consortium of around 150 museums invited by the Art Bridges Foundation, which works to increase access to American art. Art Bridges provides financial and strategic support for exhibition development, collection loans from Art Bridges and other museums, and programs designed to educate, inspire and deepen engagement with local audiences.

"Hear What I'm Seeing?" - First Saturdays Video Series. Experience art through musicians as they reflect on what they see in commentary and live musical performance. This video series led by Nate McClendon will feature local and K-State musicians. Enjoy the recorded events at beach.k-state.edu/videos. While you are there subscribe to our YouTube channel!

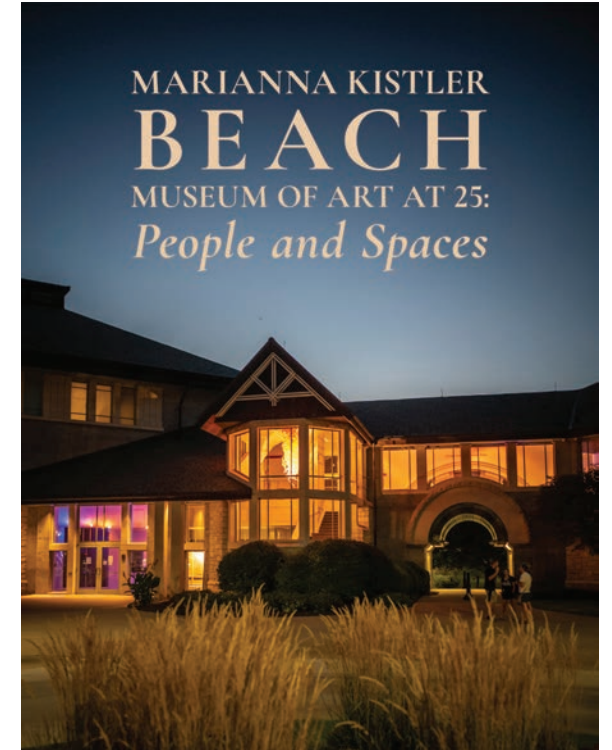
Friends of the Beach Museum of Art Publish Commemorative E-book

When you've visited the Beach Museum of Art have you wondered, "Who was John Helm, and why is there a gallery with his name?" What about the Lincoln and Dorothy Deihl Entrance or the Dan and Beth Bird Archway? Those questions and more are answered in the new e-book *Marianna Kistler Beach Museum of Art at 25: People and Spaces*.

Friends of the Beach Museum of Art board members led by Tony Crawford spent two years researching and writing about the people whose names appear on spaces in and around the museum. The resulting e-book has been published by K-State Libraries' New Prairie Press. It can be downloaded for free at <https://newprairiepress.org/ebooks/43/>.

Included are contributions by Director Linda Duke and former K-State First Lady Ruth Ann Wefald. Wefald took the lead in obtaining supporters and funds to establish a home for the university's art collection. Also spotlighted is the museum's namesake, Marianna Kistler Beach.

The diverse group of donors and K-State figures featured in the volume made significant contributions to the museum during its twenty-five year history that have helped it become a vibrant place for the collection, study, and presentation of the visual art of Kansas and the region.

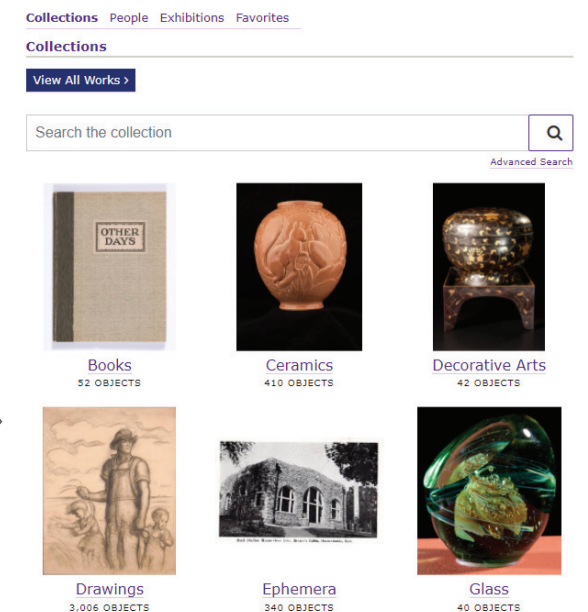


E-book cover image

New online collection search system

The museum is pleased to launch its new online collection search page powered by eMuseum from Gallery Systems. In 2019 the museum began the ambitious task of transitioning its collections database and online search system over to TMS Collections and eMuseum. With the newly launched online collection portal, users can access more images and information than previously and save and share favorites on a range of devices. Explore this new resource at: <https://beach.emuseum.com/collections/>

Screen capture of the new collection search webpage





21st Century Community Learning Centers Afterschool Program

The Beach Museum of Art has been taking area students on imagined trips to Africa through art and artmaking. Boys and Girls Clubs at Bluemont, Northview, Lee and Theodore Roosevelt Elementary Schools in Manhattan have participated this year through the schools' 21st Century Community Learning Centers grants.

Education staff including intern Cassie Wefald introduce students to African art and artifacts from the museum's Teachers Resource Center and develop art projects for sessions. Many of the objects in the Resource Center's "African box" have come from donors, among them Sandy and Chuck Bussing (baskets made in Botswana) and Warren and Nancy Prawl (calabash utensils).

Participants in the program have a chance to:

- Play a variety of drums, bells, kalimbas, and rattles from different countries, and create their own dugi dugi drums.
- Examine baskets and utensils associated with food storage and preparation and weave a small basket.
- Look at and wear textiles including Kente and Andinkra cloth from Ghana and make their own stamp and strip design.
- Learn about how masks are used in traditional African cultures and make a celebration mask of their own.

< Top Image:
Students trying African instruments at Bluemont Elementary School.

Bottom Image:
Balancing a Botswana Basket at Northview Elementary School.



E-book on Gordon Parks and Kansas to be published by New Prairie Press

Kansas State University's New Prairie Press will publish the exhibition catalogue, *Gordon Parks: "Homeward to the Prairie I Come,"* to accompany the museum's exhibition of the same title. Edited by Curator Aileen June Wang, this open-access digital publication features new research about photographer and Kansas native Gordon Parks and his career as a multidisciplinary artist. The book will provide the first comprehensive account of the artist's activities in his home state late in his career. Authors Wang, Collections Manager Sarah Price, and K-State English professors Mark Crosby, Katherine Karlin, and Cameron Leader-Picone have examined materials from numerous archives in their effort to provide insight into how Kansas served as a point of reference and source of inspiration for Parks. The book includes a foreword by Director Linda Duke and K-State English Department Head Karin Westman. Check the museum website in early spring for the book's launch by New Prairie Press.

Gordon Parks, *Mrs. Jefferson*, 1950, printed in 2017, gelatin silver print, > 16 7/8 x 14 in., gift of Gordon Parks and Gordon Parks Foundation, 2017.373
Gordon Parks images courtesy of and copyright The Gordon Parks Foundation



^ Morton Goldman, *Portrait of Patricia DuBose Duncan*, 1965, gelatin silver print, 13 9/16 x 15 9/16 in., gift of Patricia DuBose Duncan, 1998.93

Prairie Studies Initiative Updates

Near the end of 2021, the tallgrass prairie lost one of its most eloquent spokespersons and passionate advocates. Multimedia artist Patricia Duncan died in Topsham, Maine, September 17. Soon after Pat moved to Kansas with her architect husband, Herb Duncan, she plunged into research about the fragile and fast-disappearing tallgrass ecosystem. Using her skills as an artist and writer, she began a unique public education initiative in the 1970s that included publishing a book, *Tallgrass Prairie: The Inland Sea*, and creating for the Smithsonian Institution a forty-panel traveling exhibition about the cultural and natural history of this ecosystem. The *Tallgrass Prairie: An American Landscape*, traveled throughout the United States during a ten-year period. These projects, along with her participation in regional activism, helped generate support in Congress for the creation of the Tallgrass Prairie National Preserve near Strong City Kansas.

Pat's work has been an inspiration for many people, including the staff of the Beach Museum of Art. The museum's Prairie Studies Initiative has been one effort to continue her vision of bringing science and art together in service to the prairie.

Pat's Smithsonian exhibition is available on the museum's website at: beach.k-state.edu/prariestudies/patduncan.html. It can also be accessed on the *Touch the Prairie* interactive screen in the museum.

STAFF SPOTLIGHT



I recently spoke with the museum's new Gallery Teacher Georgia Allgier as she prepared to facilitate a museum education program. I

learned how her interests and work experiences relate to her current role in the museum. The questions and responses below are excerpted from our conversation.

— Jui Mhatre, Communications and Marketing Specialist

Q1: Before coming to the museum, was there a job or other experience that you feel prepared you well for this work?

I have been an elementary art teacher in Colorado since 2011 and was fortunate enough to be involved in some different art outreach programs early in my career as well. Being part of a museum education program has always been an interest in the back of my mind, so when the opportunity to work at the Beach Museum presented itself, I was ecstatic to transition into teaching art in a new way and in a new environment. During my time as a classroom teacher, I learned a lot about how to engage my students and families, so I could provide them with a positive experience. I feel passionate about bringing my background and skillset to the various programs here at the Beach in order to strengthen an already amazing art education program.

Q2: What recent project has been satisfying for you personally and why?

The *Gordon Parks: "Homeward to the Prairie I Come"* and *Doug Barrett: Find your Voice* exhibitions have been really interesting to research and look at side by side. It has been challenging because there is a lot to learn about both artists and their work, but the challenge has been very satisfying. As a non-Kansas native, I am discovering this community, region, and the history of the area because of these artworks. It is always fun to learn about a new place and, I feel, extremely special to learn about it through artists and their lives.

Q3: Is there an upcoming program or exhibition at the museum to which you especially look forward?

I am really looking forward to the Spring ARTSmart classes. I enjoy researching the artists and art pieces in our exhibitions, so getting to share that with kids is very exciting. We have rich conversations and then get creative in the classroom with our own ideas while taking inspiration from the different artworks. I am also looking forward to getting to know and building relationships with the families who attend our programs. It is so meaningful to connect over a shared interest in the arts. Watching students problem solve, create, and then get excited about their work is a hugely fulfilling thing to be a part of!

— Georgia Allgier

Miki A. Baird, ... *don't throw this envelope away* (detail), 2015, collage of torn junk mail papers on inkjet prints on felt, 117 1/4 x 20 in., courtesy of Haw Contemporary, 2017.579

FRIENDS OF THE BEACH MUSEUM OF ART



Meet the president

The Friends of the Beach Museum of Art helped the museum staff celebrate its 25th anniversary with a virtual get-together last October. I would like to thank past Friends presidents and others who helped make the museum possible, among them former K-State First Lady Ruth Ann Wefald and museum namesake Marianna Kistler Beach. I also thank Director Linda Duke and the current museum staff. They have adapted to the constraints of the pandemic by making several exhibitions available virtually as well as in-person. Meeting the challenges of the pandemic in

this way has allowed the work of the founders of the museum to go forward.

Tony Crawford, immediate past president of the board, chaired a committee to write and publish a book commemorating the museum's 25th anniversary, *Marianna Kistler Beach Museum of Art at 25: People and Spaces*. The volume highlights those who have spaces named after them in the museum building. These are people who made important contributions to the museum during its history. The free e-book is published by New Prairie Press and can be viewed at newprairiepress.org/ebooks/43/.

To commemorate the museum's anniversary, longtime Friends member Carole Chelz has posted a variety of mementos on panels on the second floor of the museum. She has included photos, invitations to museum events, news articles, and other items charting the history of the museum and its modern Friends organization. Thanks to Carole for her contribution.

Friends and museum staff continue to respond in a positive way to the pandemic through the initiative "Parties with a Purpose." The aim is to gather in people's homes to watch the museum's online programs or to gather after an in-person event. A staff member and a Friends Board member attend each party. The first "after party" took place at the home of Karen McCulloh in September. These parties are a way to bring people together in a safe way as possible to participate in museum events and to encourage people to join the Friends.

The Membership Committee co-chaired by Susan Noblett and Barbara Gatewood is meeting to find ways to encourage K-State personnel and students, as well as community members, to become Friends of the museum. We invite you to join the Friends of the Beach Museum of Art, call 785-532-7718 or go to beach.k-state.edu/support/friends-of-the-beach/.

— Judy Regehr, President

FRIENDS OF THE BEACH MUSEUM OF ART

The Friends board functions to organize and implement volunteer activities on behalf of the Marianna Kistler Beach Museum of Art. Its members are comprised of annual donors and it operates according to its own by-laws.

Judy Regehr, *President*
 Anne de Noble, *President-Elect*
 Jeff Sackrider, *Vice President*
 Marlene VerBrugge, *Secretary*
 Tony Crawford, *Past President*

Board Members (* indicates past president)

Doug Barrett	Susan Noblett*
Denise Biberstein	Katie Philp
Tony Crawford*	Judy Regehr
Anne de Noble	Jeffery Sackrider
Gloria Freeland	Marlene VerBrugge
Mary Kevin Giller	Alison Wheatley
Susie Grier	Sue Ann Wright
Amy Gross	
Linda Knupp	
Karen McCulloh	

Ex Officio Members

Linda Duke, *Museum Director*
 Martha Scott, *Museum Donor Relations Assistant*
 Erin Wiersma, *K-State Department of Art*

Friends Advisors (* indicates past president)

Mimi Balderson	Loretta Johnson
Mickey Chance-Reay	Sharon Snyder*
Carole Chelz*	Ruth Ann Wefald
Tara Coleman	Kelly Yarbrough
Marla Day	
Barbara Gatewood	

ADVISORY COUNCIL

The Advisory Council is a group of expert community and university professionals who advise the museum’s director on various museum activities. The Advisory Council includes subcommittees of finance, collections, programming, and other areas where expertise can improve functions

Norman Akers
 Leslie Brothers
 Margaret Chen, *Chair*
 Tim de Noble
 Matthew Gaynor
 Tom Giller
 Michael Goss
 Jackie Hartman
 Don Lambert
 Joe Mocnik
 Jason Morales
 David Procter
 Richard Seaton, *Vice Chair*
 Lucas Shivers
 Be Stoney
 Mary Tolar
 Marvin Wade
 Jeff Ward
 David Weaver
 Mindy Weaver
 Fran Willbrant

Ex officio

Kevin Nalette
Office of the President
 Eric Holderness
K-State Foundation
 Judy Regehr
Friends of the Beach Museum of Art
 Linda Duke
Museum Director
 Robin Lonborg
Museum Assistant Director of Operations
 Martha Scott
Museum Donor Relations Assistant

THANK YOU TO OUR 2021 – 2022 EXHIBITION AND PROGRAM SPONSORS



Top and bottom photos by Kansas State University, Communications and Marketing

Wendell Gladstone, *Chain Reaction: Rose Pearl* (detail), 2018, embossment with printing ink and pearlescent powders adhered to homemade paper with Ruplex spray, 37 1/2 x 29 in., 2019.266

Major Sponsors

The Alms Group
 Art Bridges
 The Beach-Edwards Family Foundation
 Dan and Beth Bird
 Cytek Media Systems, Inc.
 Dow Center for Multicultural and Community Studies at K-State Libraries
 Friends of the Beach Museum of Art
 The Gordon Parks Foundation
 Greater Manhattan Community Foundation’s Lincoln & Dorothy I. Deihl Community Grants Program
 K-State Department of Art
 K-State Division of Information Technology
 St. John’s Bible Fund at K-State Libraries
 Weary Family Foundation

Sponsors

Dan and Beth Bird
 Jerry and Barbara Boettcher
 Chuck and Sandy Bussing
 Mary Cottom
 Terry and Tara Cupps
 Dow Center for Multicultural and Community Studies at K-State Libraries
 Annette and Steve Huff
 Archie R. and Dorothy E. Hyle Family
 Ann and Mark Knackendoffel
 Mary Helm Pollack and Larry Pollack
 Judy and David Regehr
 Steve and Debbie Saroff
 Bill and Sharon Snyder
 David and Mindy Weaver

Love Art? Support an exhibition and its programs!

Additional privileges are available to businesses or individuals who sponsor specific exhibitions and programs. Please contact Director Linda Duke at lduke@ksu.edu for details.

RECENT ACQUISITION



< Louis ShipShee, title unknown (man in bison headdress), ca. 1970, acrylic on velvet mounted on board, 20 x 16 in., gift of Don Lambert, 2021.26