

(11) *Untitled*, 2008



(2) *Untitled*, 2008

YOONMI NAM: TRANSIENT LANDSCAPES

2010 Friends of the Beach Museum of Art gift print artist

June 18–December 19, 2010

Curator: *Elizabeth G. Seaton*
 Graphic Design: *Marsha Jensen*
 Printing: *K-State Printing Services*

Photography by *Aaron Paden, Lawrence, Kansas*, except
 FOBMA gift print by *David Mayes, K-State Photo Services*.
 Photography courtesy of the artist (www.yoonminam.com)

This exhibition is funded by the Friends of the Beach Museum
 of Art Business Partners:

Art Craft Printers & Design	Meadowlark Hills Retirement Community
Astra Bank	Realty Executives–Weis Real Estate
BG Consultants	Sir Speedy–Hawley Printing Services
Bruce McMillan, AIA Architects, P.A.	Steve's Floral
Cereal Food Processors	Strecker-Nelson Gallery
Commerce Bank	Sunflower Bank
Emerald City Market	Sunny 102.5 FM
Farrar Corporation	David P. Troup, Attorney at Law
Grand Mere Development	The Trust Company of Manhattan
GTM Sportswear	UMB Bank n.a.
Jacobson & Jacobson CHTD	Varney's Bookstore
Kansas Farm Bureau	William T. Kemper Foundation
Landmark National Bank	
Limbocker Enterprises	
Little Apple Toyota–Honda	



©2010 by Marianna Kistler Beach Museum of Art,
 Kansas State University, Manhattan. All rights reserved.

CHECKLIST

Note: Dimensions refer to sheet size, height preceding width. All
 works collection of the artist unless otherwise indicated.

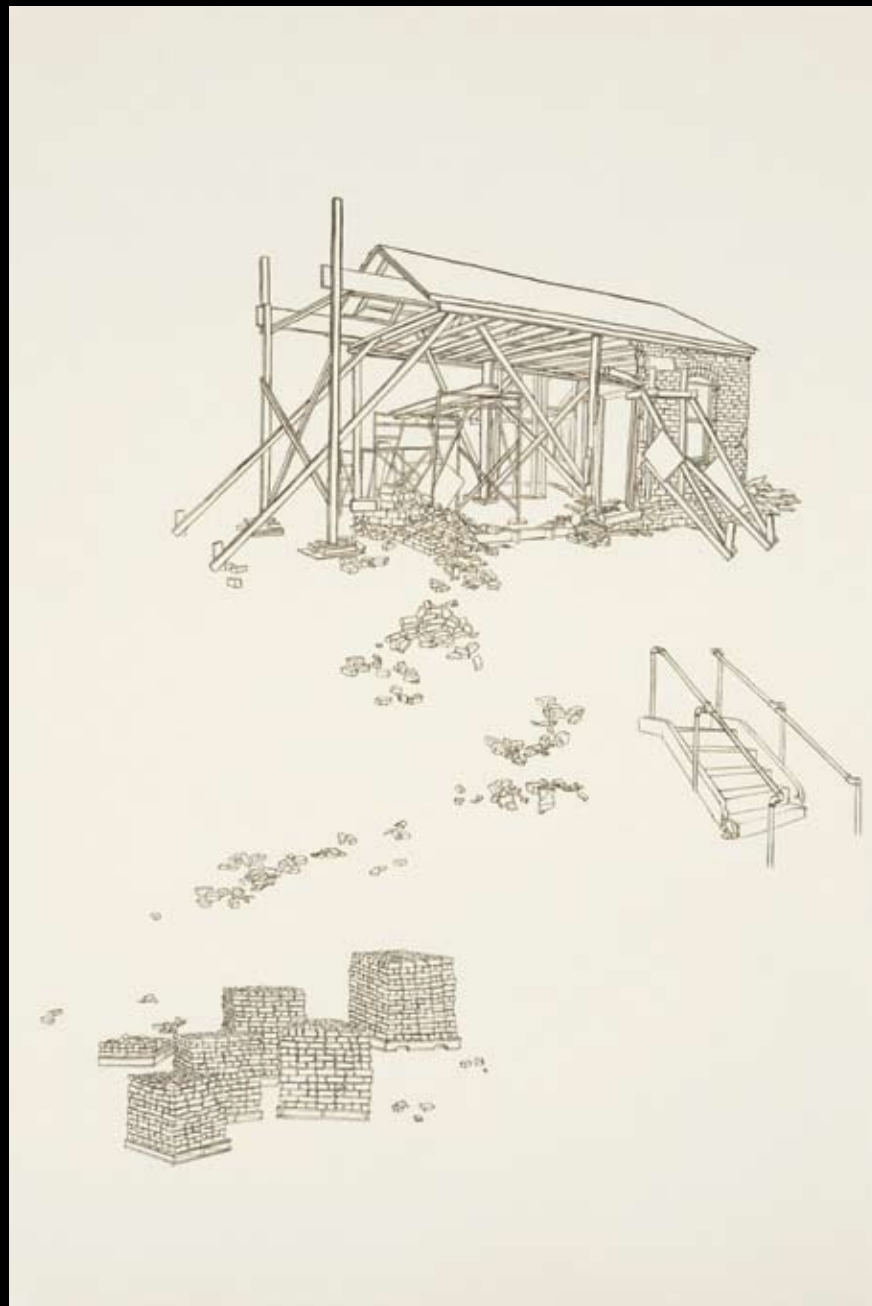
Yoonmi Nam
 Born 1974, Seoul, South Korea

- | | |
|---|---|
| 1.
<i>Untitled</i> , 2008
Sumi ink on mulberry paper
38 x 26 in. | 8.
<i>Untitled</i> , 2008
Sumi ink on mulberry paper
38 x 25 in. |
| 2.
<i>Untitled</i> , 2008
Sumi ink on mulberry paper
38 x 26 in. | 9.
<i>Untitled</i> , 2008
Sumi ink on mulberry paper
38 x 25 in. |
| 3.
<i>Untitled</i> , 2008
Sumi ink on mulberry paper
38 x 26 in. | 10.
<i>Untitled</i> , 2006
Sumi ink on mulberry paper
38 x 26 in. |
| 4.
<i>Untitled</i> , 2008
Sumi ink on mulberry paper
38 x 25 in. | 11.
<i>Untitled</i> , 2008
Sumi ink on mulberry paper
38 x 25 in.
Collection of Marjorie Swann
and Bill Tsutsui |
| 5.
<i>Untitled</i> , 2008
Sumi ink on mulberry paper
38 x 25 in. | 12.
<i>Untitled</i> , 2010
Color lithograph on paper
16 1/8 x 9 in.
2010 Friends of the Beach
Museum of Art gift print |
| 6.
<i>Untitled</i> , 2008
Sumi ink on mulberry paper
38 x 25 in. | Front cover:
(5) <i>Untitled</i> , 2008 |
| 7.
<i>Untitled</i> , 2008
Sumi ink on mulberry paper
38 x 25 in. | |

YOONMI NAM: TRANSIENT LANDSCAPES



JUNE 18–DECEMBER 19, 2010



(9) *Untitled*, 2008



(8) *Untitled*, 2008

ARTIST'S STATEMENT

Since 2005 I have been working on black and white sumi ink drawings based on techniques outlined in traditional Chinese painting manuals. Although I was born and raised in South Korea, my art education emphasized Western art and art history. Only after years of living in America did I come to realize the importance of Asian cultural traditions. Since then, my work has been connected to re-exposing myself to my cultural history and re-teaching myself to paint using traditional Asian brush painting techniques. My desire is not to become a traditional painter. Rather, it is to use traditional techniques to express the sense of estrangement I have often felt living in Eastern and Western cultures. I am drawn to the transitional existence in which ideas and states of being cannot quite be determined to be this or that, but hover uncomfortably somewhere in between. The images in this exhibition depict man-made structures that are in transition—in the process of being torn down, built up, or simply in some kind of state of change. They are drawn from the everyday environment I observe in Kansas. I am using this imagery as a metaphor for myself as a person and an artist.

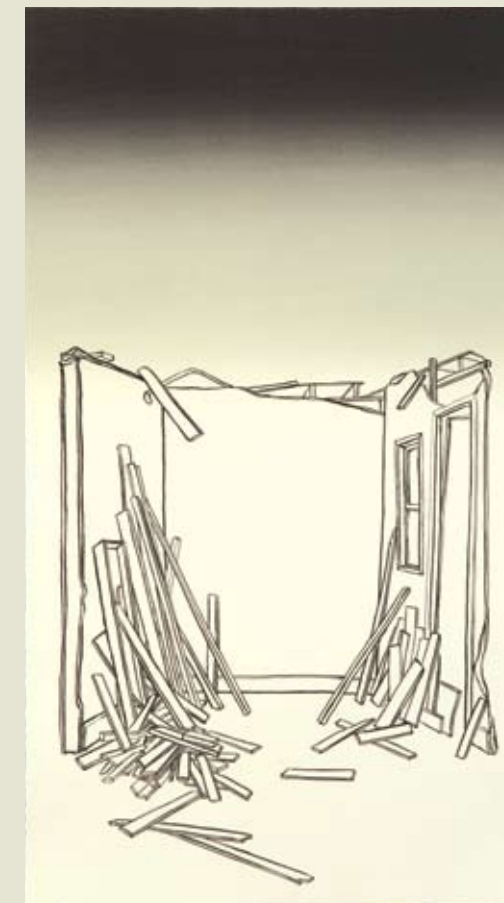
—Yoonmi Nam, Lawrence, Kansas

BIOGRAPHY

Yoonmi Nam is the 2010 Friends of the Beach Museum of Art gift print artist. Nam was born and raised in Seoul, South Korea, spending part of her youth in Canada. She earned a BFA degree in printmaking from Seoul's Hongik University and an MFA degree in painting and printmaking from the Rhode Island School of Design (2000). Nam's work, which includes prints, installations, and drawings, considers what she refers to as "the cross-cultural experience and sense of place." Nam's recent study of traditional ink paintings and woodblock prints has taken her to Japan, Korea, and China. In 2009 and 2010 she journeyed to the Tibetan region of China with the Golok Study Group to develop English and arts curricula for the Mayul School. Nam has received numerous grants and fellowships to support her research and travel. Recent awards include the Hall Center Creative Work Fellowship, the Kansas Arts Commission Mid-Career Artist Fellowship, and the Center for East Asian Studies International Research Travel Grant. Nam teaches printmaking and drawing at the University of Kansas, where she has been a faculty member since 2001.

FRIENDS OF THE BEACH MUSEUM OF ART GIFT PRINT

The Friends of the Beach Museum of Art (FOBMA) commissions a printmaker or photographer to produce a limited-edition print for sale to Friends and the public each year. Kansas State University's "Friends of Art" started the gift print program in 1934 as a reward for members. The program still serves this purpose and recognizes outstanding contemporary printmakers associated with Kansas. Among the artists who have produced FOBMA gift prints are William Dickerson, John Talleur, Margo Kren, Terry Evans, Dan Kirchhefer, Robert Sudlow, and Michael Krueger.



(12) *Untitled*, 2010
2010 FOBMA gift print



(6) *Untitled*, 2008



(3) *Untitled*, 2008