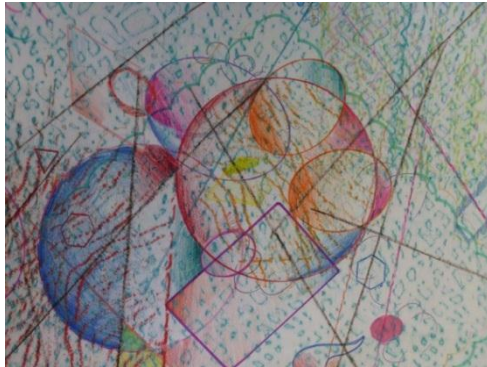


## SCHOOL TOURS



Math-integrated tours of the museum's permanent collection with art projects, for grades 4-6, at the Marianna Kistler Beach Museum of Art.

Programs are developed to complement local curriculum and Kansas Common Core Standards (Domains: Measurement and Data, Geometry, Fractions, Ratios and Proportional Relationships, & Statistics and Probability) with assistance from the K-State Math Department's Math Circle program.

Teachers may request specific topic areas:

- Geometry and Geometric Solids
- Grid Patterns and Tessellation
- Measurement and Area
- Proportions
- Linear Perspective
- Patterns
- Symmetry and Concentricity
- Platonic Solids

**Tours are free, available Tuesday-Friday, last 1½ hours, and are for grades 4-6. Bus funds are available, provided by donations to the museum.**

**Contact:** Kathrine Schlageck, Senior Educator, [klwalk@ksu.edu](mailto:klwalk@ksu.edu) or 785.532.7718.

*Bus funds are provided by individual and private foundation donations, not government funding. To financially support the bus fund and/or education programs, contact Kathrine Schlageck.*



Sunday, September 24, 2-4 p.m.  
Celebrating "M is for Math, Museum and Manhattan"

Join us for a book signing by K-State mathematician and author Natasha Rozhkovskaya, math and art activities for all ages, and a 2:30 p.m. panel discussion related to creating the book.

SPECIAL EVENT SPECIAL EVENT SPECIAL EVENT