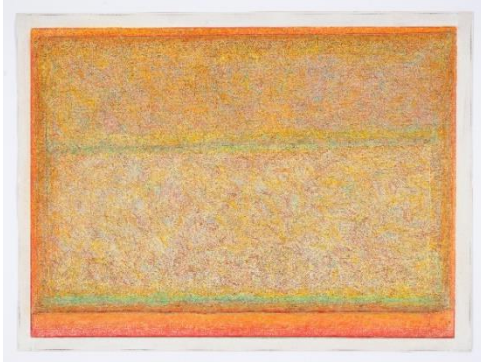


# Fall 2023 ARTSmart programs for families at the Marianna Kistler Beach Museum of Art

Kansas State University • 14<sup>th</sup> and Anderson • Manhattan, KS  
785.532.7718 • beach.k-state.edu

Gallery Hours: Tuesday – Friday 10 - 5; Thursday open 'til 8; Saturday 11-4

**ARTSmart Classes: Explore the current exhibitions. Each class includes looking activities in the galleries and an art project. Classes meet on select Wednesdays and Thursdays at 10:30 (ages 2-5) and 4:30 (all ages).**



Sept. 6 & 7: Create Your Own Exhibition  
October 4 & 5: Book Making  
November 8 & 9: Texture landscapes  
December 6 & 7: Indigenous Art

*Green Leafing*, 1965  
Colette Stuebe Bangert, BMA 2018.64

## Homeschool

**Tuesdays meet on the first Tuesday of the month and include additional academic content. Tours are appropriate for those in Kindergarten on up and include an art project.**

- Sept. 5, 1-2:30: Curatorial Challenge
- Oct. 3, 1-2:30: Graphic Novels
- Nov. 7, 1-2:30: Bison of the Prairies
- Dec. 5, 1-2:30: Indigenous Art

*Night's Red Edge*, 2009  
Lisa Grossman, BMA 2010.85



**Cost** for all above classes is \$5 per child, Friends of Museum of Art and Military Family/Blue Star discount \$2.50. Reservations are required. Payment can be made with cash or check. Call (785)532-7718 or email [klwalk@ksu.edu](mailto:klwalk@ksu.edu) for reservations. Children must be accompanied by an adult.



**Special price for Military Families:** In conjunction with the Blue Star Museum program, the Beach Museum of Art offers Military Families half price on all workshops and classes!

**New:** Friends of the Beach Museum of Art members receive half price discount with membership card. Join at <https://beach.k-state.edu/support/friends-of-the-beach/>

## Additional Family Events

### K-State Family Day Open House

September 9, 11-4 p.m.

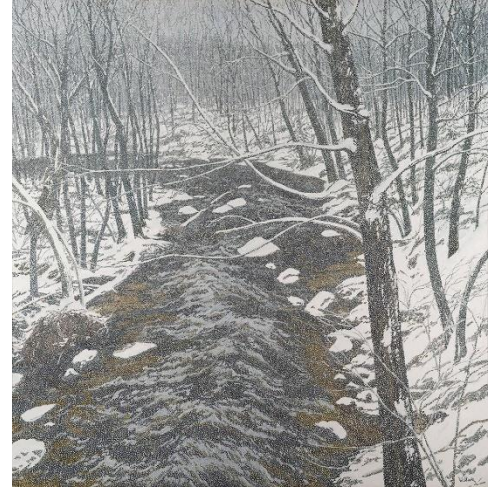
Come explore our new exhibitions, To the Star Through Art, featuring works from public school art collections from across the state. Education staff will provide gallery activities and art projects. Free!

### Holiday Workshop

December 2, 11-12:30 or 1:30 to 3 (Saturday)

Celebrate nature in all its beauty. Create cards, decorations, and ornaments from a wide variety of supplies. \$7.50 per participant (cash or check). Friends and military family discount applies. Registration is required, call (785) 532-7718 or email [klwalk@ksu.edu](mailto:klwalk@ksu.edu)

*Snow on Alden Brook, 1983*  
Neil Welliver  
Crystal Bridges Museum of American Art, 2008.8



## Virtual Resources for Families and Teachers

### Beach Buddies Facebook Group

The Beach Museum of Art from Home

[www.facebook.com/groups/bmabuddies](https://www.facebook.com/groups/bmabuddies)

Cool art, great books, fun activities, and more!

Posts include: Virtual ARTSmart Classes

BMA Book Buddies: Illustrated Artist Biographies  
and Voices: Artists Who Inspire

## Additional Virtual Programs and Resources

- **ART Bytes - First Wednesdays** Mini videos about art in the permanent collection. Please check the museum's [YouTube](#) channel
- **Virtual exhibitions and tours** can be found on the museum's website at <https://beach.k-state.edu/explore/exhibitions/>
- **Curricula**, including twenty-four animal units for *Two By Two* <https://beach.k-state.edu/participate/educational-resources/>
- **Digital apps** (Thinking About Pictures, Smartify) <https://beach.k-state.edu/explore/interactive-tools/>
- Materials are available to borrow from the **Resource Center** <https://beach.k-state.edu/documents/BMA-Education-Resources-for-Loan.pdf>