

## Marianna Kistler Beach Museum of Art 2025 WINTER/SPRING NEWSLETTER



## TABLE OF CONTENTS

2	Director's Message	10	Education	14	Kudos and Updates
3	Virtual Offerings #BEACHMUSEUMFROMHOME	11	Fall 2025 Exhibition Preview	20	Staff Spotlight
4	Exhibitions	12	Sponsor Spotlight	21	Friends of the Beach Museum of Art
8	Calendar	13	Donor Impact	23	Thank You to Sponsors

## DIRECTOR'S MESSAGE



Dear friends,

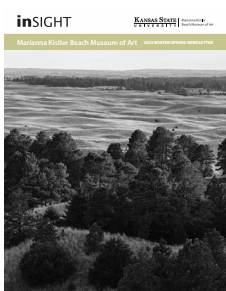
This spring, we are excited to highlight the Beach Museum of Art's Gift Print program, which has been a cherished tradition since its inception by Kansas State University's Friends of Art in 1934. The program represents nearly a century of artistic expression in printmaking and photography by Kansas-affiliated artists. Over the years, the prints have reflected various themes and perspectives that foster connections between artists and our community. The release of a gift print has also been accompanied by an exhibition for many years.

We are thrilled to announce that this year's gift print has been produced by Dana Fritz, who was raised in Prairie Village, Kansas, and now teaches photography in the art department of the University of Nebraska-Lincoln. Her work, *Tallgrass Orientation*, (See page 4) features the leaves of a compass plant (*silphium laciniatum*) overlaid on a topographical map of the Matfield Green region of the Flint Hills. The compass plant, known for its distinctive ability to align itself north and south, symbolizes guidance and discovery. In the image, the lines of the plant's leaves evoke those in the map; together, the plant and map make visible the richness of our regional landscapes. The print is striking, and it embodies our commitment

to supporting artists and enriching our community's cultural fabric.

This remarkable work will be available to the public for purchase February 4, the opening day of *Field Guide to a Hybrid Landscape: Dana Fritz*. As a special benefit, all Friends of the Beach Museum of Art will receive a 25% discount, regardless of membership level. We encourage you to contribute to the legacy of this ongoing program, whether by acquiring a gift print for your personal collection or giving one to a fellow art lover, ensuring that the stories, emotions and inspirations behind the museum's gift prints continue to inspire. Thank you for your continued support of the Beach Museum of Art and our mission to celebrate the transformative power of art.

— Kent Michael Smith, Director



### On the cover:

Dana Fritz, *Fire Tower View* (detail),  
2021, inkjet print, 16 x 40 in., courtesy of the artist



<

Emil C. Fischer  
**Anderson Hall**  
ca. 1973, ink on paper, 8 x 11 in., U5.2005

## VIRTUAL OFFERINGS #BEACHMUSEUMFROMHOME

Enjoy our interactive tools and platforms for adults, children and families. For a frequently updated guide to these online resources, visit [beach.k-state.edu/explore](http://beach.k-state.edu/explore)

### Virtual exhibitions

*Return to Prairie: Textiles for Green Burial Awareness*

*To the Stars Through Art: A History of Art Collecting in Kansas Public Schools, 1900–1950*

*Do You See What I See?*

*Voices: Women Artists in the Era of Second Wave Feminism*

*Salt Air*

*Gordon Parks: "Homeward to the Prairie I Come"*

*Doug Barrett: Find Your Voice*

*Sunrise Over Kansas: John Steuart Curry*

*Two by Two: Animal Pairs*

*Waylande Gregory: Art Deco Ceramics and the Atomic Impulse*

### eMuseum

Explore the museum's art collection of more than 11,000 objects for research or enjoyment with the online collection search tool. Visit [beach.k-state.edu/explore](http://beach.k-state.edu/explore).

### BMA YouTube channel


Find videos of art, artist interviews and special programs, including the museum's virtual series "Let's Talk Art" and "Art Bytes," the "Hear What I'm Seeing?" videocasts and more! To subscribe to our channel, find us at [youtube.com/@beachmuseum](https://youtube.com/@beachmuseum).

### Educational resources

We have resources available for schools, early childhood programs, social service organizations and homeschool groups. Visit [beach.k-state.edu/participate/educational-resources](http://beach.k-state.edu/participate/educational-resources).

### Social media

Enjoy and share fun interactive posts about regional art and artists and learn about the museum's activities. Don't forget to tag the museum when you share.

 [beachmuseum](https://www.instagram.com/beachmuseum)

 [BeachMuseumofArt](https://www.facebook.com/BeachMuseumofArt)

 [@beachmuseum](https://www.youtube.com/@beachmuseum)

### Beach Buddies Facebook group

Find resources and activities for children, families and educators, including ARTSmart classes. Join through the museum's Facebook page or visit [facebook.com/groups/bmabuddies](https://facebook.com/groups/bmabuddies).

### Staff

Kent Michael Smith, *Director*

Luke Dempsey, *Exhibition Designer and Museum Technology Lead*

Jennifer Harlan, *Programs and Events Specialist*

Emma Kellogg, *Gallery Teacher and Visitor Studies Specialist*

Theresa Marie Ketterer, *Registrar and Collections Specialist*

Robin Lonborg, *Deputy Director*

Nate McClendon, *Museum Specialist*

Jui Mhatre, *Communications and Marketing Specialist*

Sarah Price, *Registrar and Collections Manager*

Kim Richards, *Education Specialist*

Kathrine Walker Schlageck, *Associate Curator of Education*

Elizabeth Seaton, Ph.D., *Curator*

Benjamin Shubert, *Security Officer*

James Taylor, *Gallery Preparator and Building Systems Lead*

Aileen June Wang, Ph.D., *Curator*

EXHIBITIONS

**Field Guide to a Hybrid Landscape:  
Dana Fritz**

2025 Friends of the Beach Museum of Art  
Gift Print Artist

Ruth Ann Wefald Gallery: February 4–August 2, 2025

Dana Fritz’s photographs in this exhibition make visible the forces that shaped the Nebraska National Forest and Grasslands’ Bessey Ranger District in the Sandhills. This hand-planted conifer forest was overlaid onto a semi-arid grassland in an ambitious late-19th-century experiment to create a timber industry and change the local climate. In black-and-white close shots and panoramic views, Fritz beautifully highlights the natural and human-defined patterns on the land.

The forest’s row-crop trees were never commercially harvested, and for decades the site was protected from the natural cycle of fire. In 2022 five thousand acres of the park burned in an accidental fire. Fritz’s presentation of the site before and after the fire has become an important record.

The forest provides a rich metaphor for the nation’s current environmental predicaments, including catastrophic forest fires and tree encroachment in the grasslands. The district, which includes a tree nursery, is today focused on conservation, grassland restoration, and native reforestation, with an aim of mitigating large-scale climate change.

Raised in Prairie Village, Kansas, Fritz is the Hixson-Lied Professor of Art at the University of Nebraska–Lincoln. She is the 2025 Friends of the Beach Museum of Art Gift Print Artist. Her photographic edition, *Tallgrass Orientation*, relates to work she created during a 2023 Tallgrass artist residency in Chase County. Giant leaves of a compass plant lie over a topographic map of the area where she collected them. The leaves’ fingers point to the poles and orient their flat faces to the east and west sun. Indigenous and settler travelers valued compass plants for orientation in a vast prairie with few landmarks.

Major Sponsors: Greater Manhattan Community Foundation’s Lincoln & Dorothy I. Deihl Community Grants Program  
Contributing Sponsors: David and Judith Regehr



**Related events**

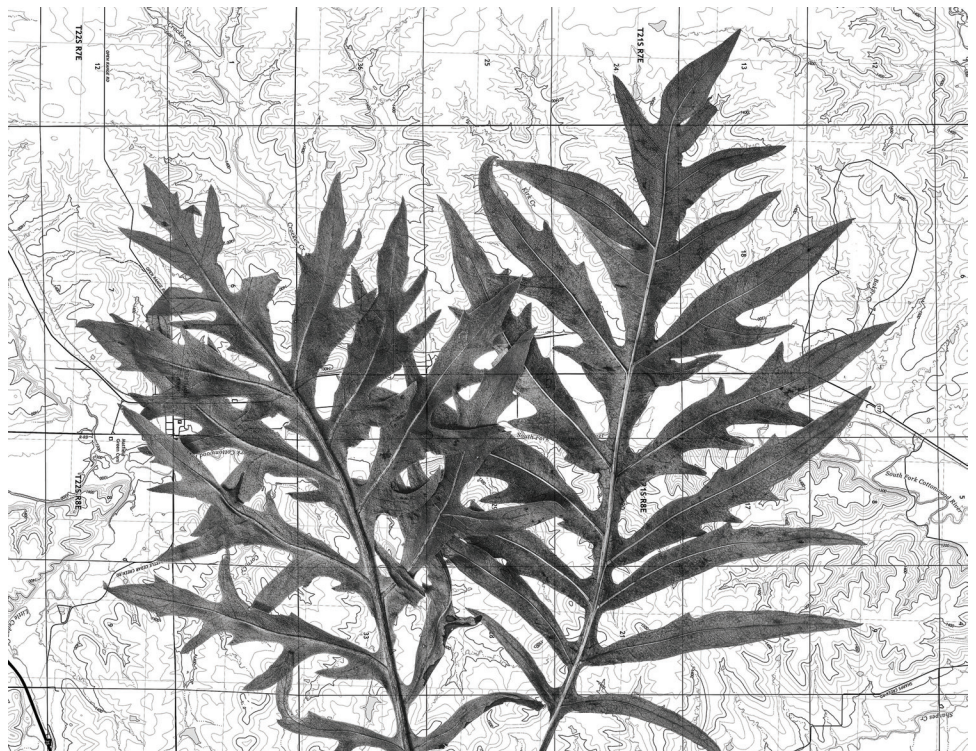
**Artist Talk**

**Field Guide to a Hybrid Landscape: Nebraska’s Hand-Planted Forest**  
Thursday, February 20, 5:30-6:30 p.m.

**Trees in the Grasslands: Three Perspectives**

Thursday, April 24, 5:30-7 p.m.  
Livestream conversation with Dana Fritz; Jesse Nippert, K-State professor of biology; and Carson Vaughan, author and freelance environmental reporter. Moderated by Curator Elizabeth Seaton.

Dana Fritz, *Decaying Pine among Eastern Redcedars* and *Pine Sapling*, 2017–2021, inkjet prints, 16 x 20 in. each, courtesy of the artist



Dana Fritz  
**Tallgrass Orientation**  
2024, inkjet print, 16 x 20 in.,  
courtesy of the artist

## In Bloom

Donna Lindsay Vanier Gallery: February 25–August 30, 2025

Join us in celebrating the 150th anniversary of the Kansas State University Gardens with floral imagery from the museum’s collection. This exhibition is also our annual collaboration with the Manhattan Public Library’s summer reading program. The American Library Association has chosen the theme, “Color Our World,” and we promise a riot of color!

Exhibition highlights include glass artist Dale Chihuly’s *Imperial Iris Persian Pair*, a gift of Ross and Marianna Beach, and Cubist artist George Braque’s *Les Marguerites*. Numerous Midwestern artists will be represented, among them John F. Helm, Jr., Avis Chitwood, Birger Sandzén and Grant Wood. Wood’s *Tame Flowers* in the exhibition was hand colored by his sister, Nan Wood. Contemporary artists featured include Renée Stout, Karsten Creightney and Kate Nessler. Nessler’s *Lady Slipper Orchid* (below right) was a Royal Horticultural Society gold medal winner.

Elementary school tours of *In Bloom* will focus on botany and scientific drawing. The exhibition will also provide subject matter for the museum’s summer ARTSmart programs featuring visits to The Meadow north of the museum, discussions of the importance of pollinators and a variety of colorful art projects.

The exhibition has been co-curated by Gabriella Randall as part of a museum certificate program in K-State’s anthropology department. Randall is majoring in art history and minoring in classics. Her work on the exhibition was part of a 2024 summer internship at the Beach Museum of Art which was generously funded by Tony Crawford.

Major Sponsors: Friends of the Beach Museum of Art, Greater Manhattan Community Foundation’s Lincoln & Dorothy I. Deihl Community Grants Program  
Sustaining Sponsors: Dan and Beth Bird  
Media Sponsor: Radio Kansas

### Related events

Let’s Talk Flowers with Karsten Creightney  
A Let’s Talk Art conversation  
Thursday, March 6, 5:30 p.m.  
Livestream

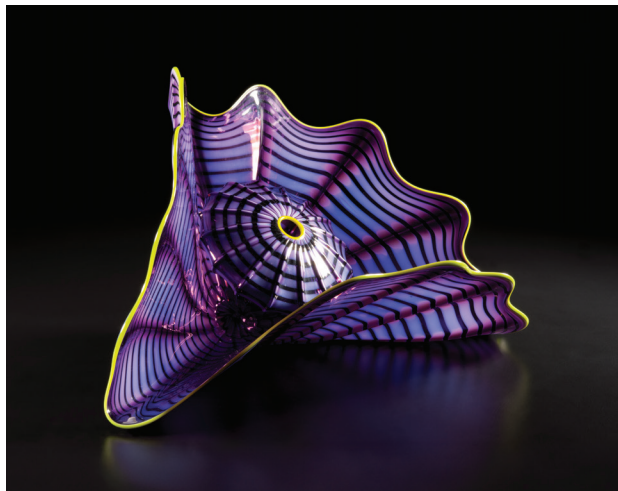


Kate Nessler  
*Lady Slipper Orchid*

1994, watercolor on paper, 15 x 10 1/2 in.,  
gift of Chris J. Haas, M.D., 2024.25

Dale Chihuly, *Imperial Iris Persian Pair*

1999, blown glass, 17 1/2 x 12 1/2 x 10 1/2 in., acquisition made possible with funds provided by Marianna & Ross Beach, 2000.3



## Printing Beyond Borders: Contemporary Indian Prints at Kansas State University

Marion Pelton Gallery: January 21–May 31, 2025

*Printing Beyond Borders* gets a refresh in the spring with a new set of prints. The works were purchased in India for K-State during the mid-1980s by professor of printmaking Charles Stroh (1943–2022).

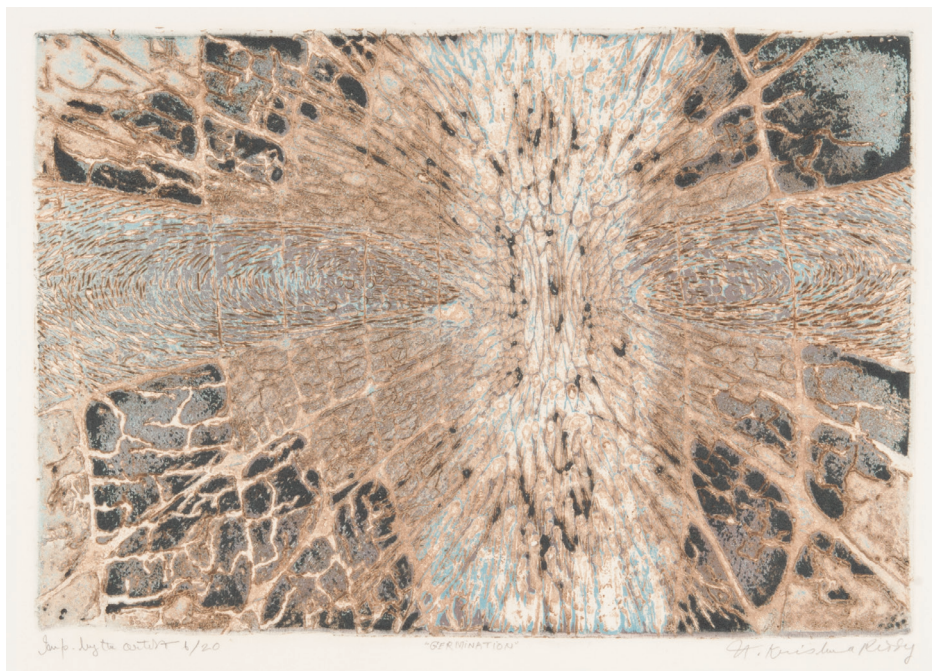
The new installation highlights the global scope of Indian printmaking in the 1970s and 1980s. Krishna Reddy, a native of Andhra Pradesh in southern India, studied in Europe and became co-director of the printmaking workshop Atelier 17 in Paris from the 1950s to the 1960s. Atelier 17's reputation as an innovation hub, as well as Reddy's presence there, attracted other artists from India. In the United States, Stroh invited Indian artists, including Reddy, to visit as lecturers and artists-in-residence.

This exhibition was curated by Vidhita Raina and Michael VanHartingsveldt of the Kress Department of Art History at the University of Kansas, in collaboration with Beach Museum of Art Curator Aileen June Wang. Longtime museum patron Margo Kren supported the research for this project.

Major Sponsors: Greater Manhattan Community Foundation's Lincoln & Dorothy I. Deihl Community Grants Program

### Related events

**India: A Cultural Celebration**  
March 13, 2025, 5:30-7:30 p.m.



Jyoti Bhatt  
**The Lost Pundit (N.Y. 1966)**  
1978, etching and aquatint, 1985.14



Krishna Reddy, **Germination**  
1961, etching and engraving, inked intaglio and relief (color viscosity/simultaneous color inking), 1987.1



## STE[A]M: Exploring Science and Math through Art

Archie & Dorothy Hyle Family Gallery: through June 14, 2025

This colorful exhibition supports two STE[A]M (Science, Technology, Engineering, and Math plus Art) learning experiences for school-age students and ARTSmart program participants at the Beach Museum of Art.

Area first graders study light and sound waves as part of their science curriculum. Their visit to the museum allows them to learn more about light and color in art. Roger Routson's *Konza Prism* allows them to explore light waves, refraction, and the science behind rainbows.

The exhibition is also used for the museum's Intersection of Math and Art tour for older elementary and middle school students. A long-time favorite, this program was inspired by Alan Shields's *Kansas Meatball*, in the Orval Hempler gallery. The sculpture is an icosahedron, one of the five Platonic Solids or 3-D tessellations.



ARTSmart participants learn about the intersection of math and art through the work, *Kansas Meatball* by Alan Shields.

Amanda Arnold Elementary School first graders make their own rainbow, based on Roger Routson's *Konza Prism*. By looking at the length of the "light waves" they understand the order of the rainbow's colors.



CALENDAR

## Programs and Events | Spring 2025

All events, which are free and open to the public, will be held in the museum's UMB Theater and/or virtually. More details and links to join virtual events at [beach.k-state.edu/calendar](http://beach.k-state.edu/calendar). For in-person events requiring preregistration, call 785-532-7718 or email [beachart@k-state.edu](mailto:beachart@k-state.edu).

### Guest Artists and Speakers



Karsten Creightney



Dana Fritz



Nate McClendon



Jesse Nippert



Carson Vaughan

Marjorie Schick, *The Spiral* (detail), 1994, papier mache, formed and painted, 7 1/4 x 11 3/4 x 10 1/2 in., Friends of the Beach Museum of Art purchase, 2011.208





Saturday, February 1, 1:30 p.m.

**Family Valentine's Workshop**

\$7.50 supply fee per participant, half price for military families and Friends of the Beach Museum of Art members (cash or check accepted). Registration required.

February 4–13

**SweetART Contest**

Vote during museum open hours.

February 10–15,  
during museum open hours

**USD 383 Early Expressions  
Student Art Exhibition**

Public reception, February 15, 1-3 p.m.

Thursday, February 20, 5:30 p.m.

**Artist Talk | Field Guide to  
a Hybrid Landscape: Nebraska's  
Hand-Planted Forest**

Thursday, February 27, 5:30 p.m.

**Double Take: Gallery Tour of  
Select Artworks**

Thursday, March 6, 5:30 p.m.

**Let's Talk Flowers with  
Karsten Creightney**

**A Let's Talk Art Conversation**  
Livestream

Thursday, March 13, 5:30-7:30 p.m.

**India: A Cultural Celebration**

Thursday, March 27, 5-6:30 p.m.

**Gathering of Friends**

Private donor event

Thursday, April 3, 5:30 p.m.

**Double Take: Gallery Tour of  
Select Artworks**

April 5–11, during museum open hours

**Celebrating Art and Week of the  
Young Child Display**

Exhibition of art by students in USD 383  
Early Learning and K-State Center for Child  
Development programs.

Thursday, April 10, 5-7 p.m.

**Week of the Young Child  
Arts Thursday Open House**

Saturday, April 12, 9 a.m.-4 p.m.

**K-State Open House**

Thursday, April 23, 5:30-7 p.m.

**Trees in the Grasslands: Three  
Perspectives**

Livestream conversation with Dana Fritz,  
University of Nebraska-Lincoln photography  
professor; Jesse Nippert, K-State professor  
of biology; and Carson Vaughan, author and  
freelance environmental reporter.

Thursday, May 1, 5-7 p.m.

**Beach Museum of Art Friends  
Members Annual Reception**

Become a Friend today to receive an  
invitation, visit [beach.k-state.edu/friends](http://beach.k-state.edu/friends)

## EDUCATION

### ARTSmart classes

Explore the current exhibitions. Each class includes looking activities in the galleries and an art project. Classes at 10:30 (ages 2-5) and 4:30 (all ages).

- Jan. 9: Picturing Kansas — Celebrating Kansas' birthday month
- Feb. 6: Patterns in the Land — Dana Fritz photography
- March 6: Abstract Art — Elements of art and design
- April 3: April Showers Bring May Flowers — Botany
- May 8: Cinco de Mayo — Mexican art study

### Homeschool Tuesdays

Homeschool Tuesdays meet on the first Tuesday of the month and allow homeschool families to investigate the exhibitions and collection with curriculum integration. Tours are appropriate for those in kindergarten on up and include an art project.

- Jan. 7, 1-2:30: Picturing Kansas — Celebrating Kansas' birthday month
- Feb. 4, 1-2:30: Patterns in the Land — Dana Fritz photography
- Mar. 4, 1-2:30: Abstract Art — Elements of art and design
- April 1, 1-2:30: April Showers bring May Flowers — Botany
- May 6, 1-2:30: Cinco de Mayo — Mexican art study

Young artists learn about art and math connections in the **STE[A]M** exhibition.



The cost for ARTSmart and Homeschool classes is \$5 per child. Friends of the Beach Museum of Art members and Blue Star/Military Families\* discount \$2.50. Payment can be made with cash or check. Reservations are required. Call 785-532-7718 or email [bmaeducation.ksu.edu](mailto:bmaeducation.ksu.edu). Children must be accompanied by an adult. If you need to cancel your reservation, please let us know so we can call those on the waiting list.

*\*In conjunction with the Blue Star Museum program*

Join Friends of the Beach Museum of Art at [beach.k-state.edu/friends](http://beach.k-state.edu/friends).

**The Exploration Station** next to the Pelton Gallery features books, activities and art projects for current exhibitions.

**ARTotes** are available at the information desk. Each tote bag contains books, games, gallery activities and guide sheets to direct families to artworks in the museum's collection.

### Virtual resources for families and teachers

Beach Buddies Facebook Group  
[facebook.com/groups/bmabuddies](https://facebook.com/groups/bmabuddies)  
 Cool art, great books, fun activities and more!

Curricula, including 24 animal units for Two By Two exhibition. See [beach.k-state.edu/participate/educational-resources](http://beach.k-state.edu/participate/educational-resources).

Materials available to borrow from the Resource Center. Visit [beach.k-state.edu/documents/BMA-Education-Resources-for-Loan.pdf](http://beach.k-state.edu/documents/BMA-Education-Resources-for-Loan.pdf).



K-State teaching assistant professor Miki Loschky's class in Modern Languages create their own Sumi-e painting.





FALL 2025 EXHIBITION PREVIEW

***Kansas Triennial 2025***

Aug. 5, 2025–May 31, 2026

***Rural America***

Sept. 2, 2025–Jan. 24, 2026

Mark Cowardin, *Just Passing Through...Again* (detail)  
ladders, 2x4s, hardware, lights and electrical components. Image courtesy of the artist

## SPONSOR SPOTLIGHT

### 2024 Beach Ball Underwriters

The second annual Beach Ball in October was a huge success, thanks in part to the incredible support of our underwriters. As one of the year's most anticipated events, it brought together art lovers, community members, and friends of the Marianna Kistler Beach Museum of Art for an unforgettable evening.

The 2024 Beach Ball set a new standard, with vibrant entertainment, a lively atmosphere, and meaningful connections, all made possible by our largest group of underwriters to date. Generous contributions ensure the continued success of the museum's programs, exhibitions, and educational initiatives, keeping art at the heart of our community.

As champions of art and culture, underwriter support helps us foster creativity and build a more connected world. The Beach Ball's success highlights the power of partnership, and we are grateful for our underwriter's role in making this event the best yet.

We thank each of our underwriters for their unwavering commitment. We look forward to celebrating together again this year as we continue to strengthen the arts in Manhattan and beyond!

### 2024 Beach Ball Underwriters:

#### Arts Hero Underwriters

Kansas State University  
Nerman Museum of Contemporary Art

#### Arts Champion Underwriter

Eagle Media

#### Arts Activist Underwriters

Manhattan Brewing Company  
The Trust Company

#### Arts Ally Underwriters

CGN Advisors  
Commerce Bank  
Brian and Aaron Stinson  
Synergistic Fit Life  
We Chase the Light Photography  
Alison Wheatley  
WTC



Photos by Autumn Shoemaker, We Chase the Light Photography

## DONOR IMPACT

### Jedel Family Foundation

In 2024, the Beach Museum of Art was honored to receive a generous grant from the Jedel Family Foundation. This gift, the first from the foundation to the museum, will play a vital role in advancing the museum's mission to connect art, people, and ideas.

Harrison Jedel, for whom the foundation is named, was born in 1924 in Kansas City, Missouri, to Mary Cohen and Sylvan Jedel. After serving in the United States Army during World War II, he graduated from the University of Oklahoma and joined his family's scrap metal business, I.J. Cohen Company. Jedel built a distinguished career and became a major shareholder in the company after his uncle's passing.

From a young age, Jedel's passion for art inspired him to collect works by both emerging and established artists. His love of the arts led him to establish a trust in 2011 supporting cancer research, education, and the arts — an enduring testament to his philanthropic spirit. Jedel passed away in 2016 at the age of 91, leaving behind a remarkable legacy.

"The Beach Museum of Art is profoundly grateful to the Jedel Family Foundation for their gift to our community," said museum director Kent Michael Smith. "Contemporary art has the power to challenge and inspire while fostering conversations that shape how we see the world and each other. This gift helps us share that transformative experience with audiences of all ages."

Today, the Jedel Family Foundation continues to honor Harrison Jedel's vision through the thoughtful leadership of trustees Jeff Weinberg, Marti Oppenheimer, Andy Kugler, Don Hubbs, and Mark Eib. Their commitment ensures that art remains a vital part of our shared experience, strengthening the connections that bring communities together.

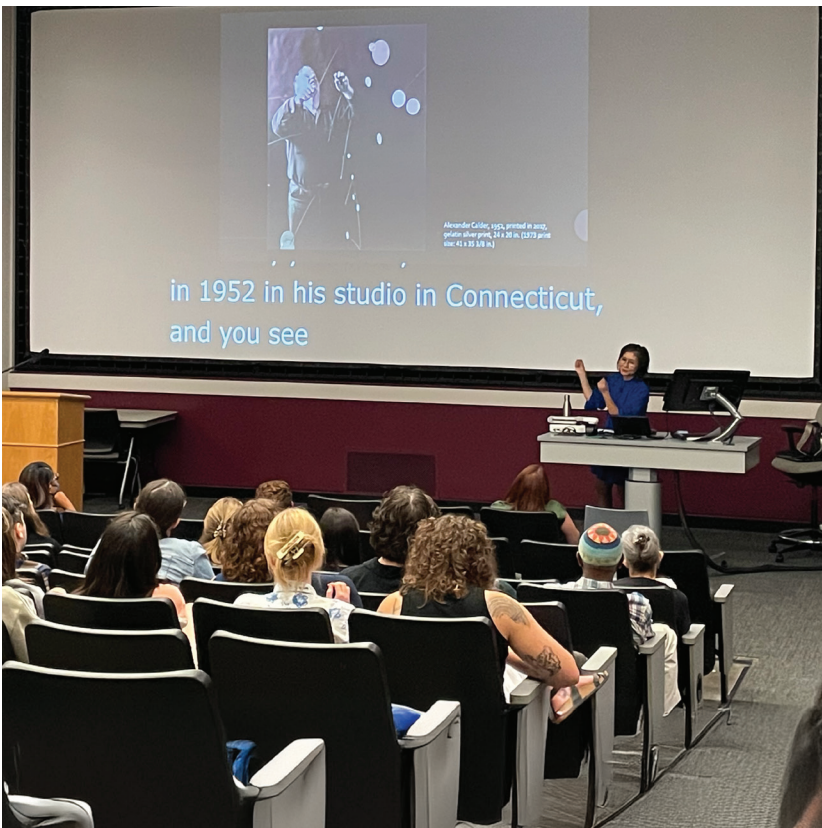
The Beach Museum of Art is proud to help carry forward Jedel's passion for art, creativity, and meaningful dialogue for generations to come.

Harold Smith, *Visible Man 22.11.18*  
2022, acrylic on canvas, 60 x 48 in., gift of the Jedel Family Foundation, 2024.33. Image courtesy of E.G. Schempf Photography



Art Miller, *John Brown statue, former campus of Western University, Quindaro archaeological district, Kansas City, Kansas*  
2020, archival inkjet print on paper, mounted on aluminum composite panel, 39 1/2 x 59 1/2 in., gift of the Jedel Family Foundation, 2024.28

**KUDOS AND UPDATES**



**Curator Dr. Aileen June Wang represents the Beach Museum of Art in Syracuse and Chicago**

Wang traveled to Syracuse, New York, in September 2024 for the launch of the traveling exhibition, *Homeward to the Prairie I Come: Gordon Parks Photographs from the Beach Museum of Art*, at the Syracuse University Art Museum. She conducted a workshop for professors, graduate students, and local teachers about how to use the exhibition to teach a wide range of topics, from Gordon Parks’s artistic interests to the Civil Rights Movement. Wang also delivered a keynote presentation attended by 100 people.

In November, Wang participated in a panel with other arts professionals moderated by Director Vanya Malloy of the David and Alfred Smart Museum of Art of the University of Chicago. The speakers shared their thoughts about working at the Smart Museum of Art as students and the relevance of university museums to campuses and local communities. The program was part of the series Salon 50 celebrating the Smart Museum of Art’s fiftieth anniversary.



Dr. Wang delivers her keynote presentation “Gordon Parks and His Ideas about Community” at Syracuse University, New York



Dr. Wang (fourth from left) at the Smart Museum of Art, University of Chicago, with co-panelists (from left to right) Associate Professor Erica Moiah James, University of Miami; Curator Caitlin Julia Rubin, Harvard Radcliffe Institute; Director H. Rafael Chacón, Montana Museum of Art and Culture, University of Montana; and Vanya Malloy

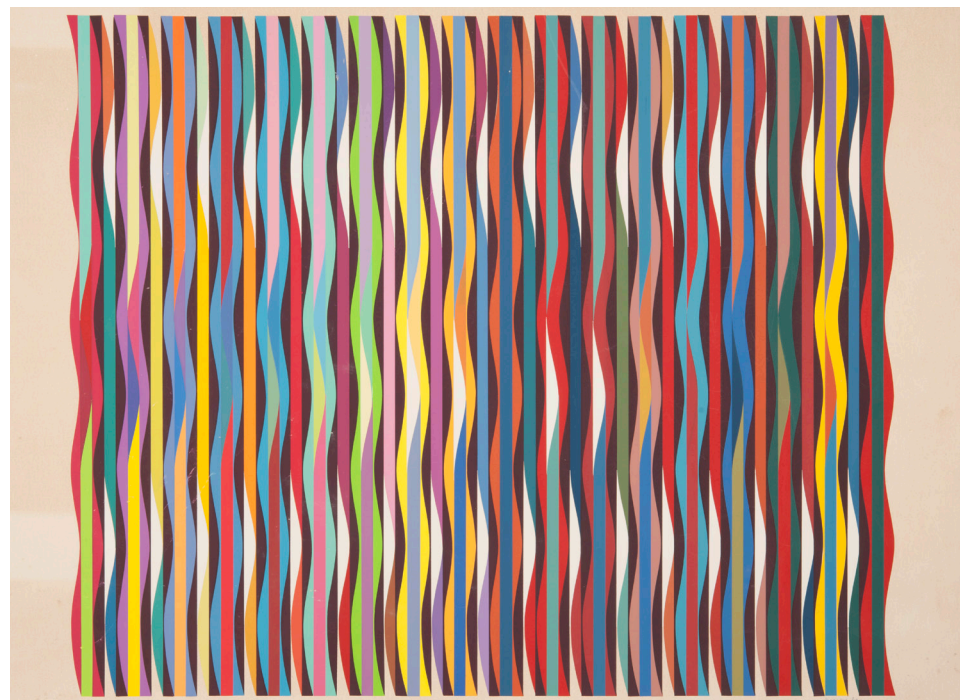
## Beach Museum of Art staff speak at Kansas Museums Association conference

Last November, Curator Dr. Elizabeth Seaton, Education Specialist Kim Richards, and Mission Hills historian Kara Heitz, organized a panel, "Kansas Schools as Art Museums," for the 2024 Kansas Museums Association conference in Fort Scott. Seaton, Richards, and Heitz introduced the museum's recent exhibition, *To the Stars Through Art: A History of Art Collecting in Kansas Public Schools, 1900-1950*, and addressed how Kansas cultural institutions might help K-12 teachers in their communities think about how to take advantage of extant school art collections to achieve 21st-century learning goals. Of the 19 institutions that lent objects to the *To the Stars Through Art* exhibition, seven were museums and libraries.



Dr. Elizabeth Seaton (right) and Kara Heitz (center) and Education Specialist Kim Richards (left) at The Gordon Parks Museum, Fort Scott Community College

Mary Anne White, *Spring Tea* (detail)  
1981, photomechanical reproduction, 5 13/16 x 4 in., CM5d.2023



Yacov Agam  
**Vibrating Colors**

20th century, screenprint, 29 1/4 x 35 1/2 in., gift of Kathleen Kulp Hill (1957) and Randall Dale Kulp (1987) in memory of Thomas Lean Hill, S1.2005



Hannah Palsa

## Beach Museum of Art shines at the biennial ARCS Virtual Conference

Registrar and Collections Specialist Theresa Ketterer served on the conference committee for the 2024 Association of Registrars and Collections Specialists, or ARCS, Virtual Conference: Synergy, held December 2-6. The conference brought together 560 registrants from around the world for a deep dive into matters related to the museum collections field. Ketterer led boardroom conversations on the topics of sustainability, deaccessioning, and insurance. She served on the panel, “Well, that could have gone better,” focusing on mishaps on the job and their solutions. In addition, Ketterer moderated a 30-minute session, “Balancing Act: Preserving Collections and Relations while Discontinuing a Campus Loan Program,” centered on events at the University of Oklahoma’s Fred Jones Jr. Museum of Art in Norman.

Graduate Curatorial Assistant Hannah Palsa participated in the lightning round with her talk, “So, You Work at 3 Different Museums,” about her employment at the Beach Museum of Art, the Chapman Center for Rural Studies, and the Historic Costume and Textile Museum on the K-State campus. The lightning round session was composed of five emerging professionals who each gave five-minute presentations. It was attended by an audience of 242 people.



Theresa Ketterer



>  
Sue Jean Covacevich  
**Sunflower III** (detail)  
1982, oil on canvas, 36 x 36 in.,  
gift of Teresa Covacevich Grana, 2018.248



## The *Manhattan Community Portrait* project shared at the International Visual Literacy Association Annual Meeting

Museum Specialist Nate McClendon and Associate Curator of Education Kathrine Schlageck traveled to San Diego, California, to present at the 56th Annual Conference of the International Visual Literacy Association, held October 6-9, 2024. The conference theme was “Illuminating Perspectives through Critical Visual Literacy.” Following an introduction to the museum by Schlageck, McClendon outlined his Manhattan Community Portrait Project and invited

audience members to participate in a conversation similar to a project program. The group discussed how we process visual information about others and the project’s goal to help us see each other with more empathy and understanding. “It was rewarding to discuss this project with scholars and researchers in the visual literacy field. In the end, several universities expressed interest in bringing the project to their campus,” McClendon said.



Nate McClendon (right) with a participant of the *Manhattan Community Portrait* project.

## Collaboration for Ongoing Visitor Experience Studies (COVES) Report 2024

From the COVES data we collected this year, we learned more about how the museum is impacting visitors. Surveyed visitors reported that they appreciated seeing local Kansas art and artists. They remarked on how visiting the museum is calming and inspiring. They commented on accessibility, noting that the staff were friendly toward service animals and that there was adequate gallery and building seating. Museum goers also reported that they have enjoyed interactive exhibitions like *wood+paper+box in your hands* and activities like voting on favorite artworks.

Some responses to an open comment, *“Is There Anything Else You Would Like to Add?”*

### September 20, 2024

I love the involving of local artists and anything within the fashion realm. Return to Prairie was a treat. I would love to see some local art shows here in the future!

### July 23, 2024

I am especially glad to have had the pleasure of speaking with Sarah [Troub] and Emma [Kellogg] today, who answered my many questions and even asked me some questions to understand what they could also share to help me even more. Amazing ... sometimes one doesn't know the questions to ask (how can we know what we don't know), what wonderful helpful people. Assets to Marianna Kistler's hopes and dreams no doubt!

### March 20, 2024

The Art Studio exhibit was moving to see, as an artist. Interactive activities like the one with wood+paper+box are also interesting. I like the digital portraits and the comic available in the exhibit as well. I appreciate seeing diverse mediums in museums and would love more of that in the future.

### March 12, 2024

Loved the Birger Sandzén art and learning of his school tours, which made me wonder if those motivated kids to grow up and acquire his art, many prints of which I see [in] estate auctions now. Loved reading the book in the kids area filled with essays of how Kansans view Kansas.

### February 10, 2024

Very much enjoyed the activity today voting on favorite artwork. Wished the exhibit with giant portraits of people had easier to understand explanation for the purpose of exhibit. Having quiet activities that are new will encourage me to bring my kids more for quiet time. Free entrance encourages smaller visits which are perfect for kids.

### Net promoter score

	2022	2023	2024	Average
<b>Overall score</b>	52.4	68.1	59.2	59.9
<b>Promotor</b>	63%	71%	66%	66.7%
<b>Passive</b>	27%	27%	28%	27.3%
<b>Detractor</b>	10%	3%	7%	6.7%

### Overall experience rating

	2022	2023	2024	Average
<b>Outstanding</b>	41%	43%	42%	42%
<b>Excellent</b>	44%	52%	48%	48%
<b>Good + fair</b>	15%	4%	10%	9.7%



At your next visit to the museum, please see our Gallery Teacher and Visitor Studies Specialist Emma Kellogg who leads the COVES data collecting at the museum. Emma would love to receive your feedback.

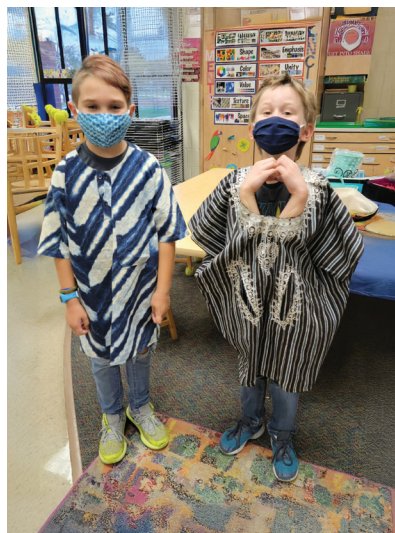
## Beach Museum of Art Resource Center Collection

An education study collection allows the Beach Museum of Art Education staff to share a world of art with area children. These objects, which come from a variety of donors, travel to area schools and organizations for International Festivals, 21st Century Community Learning Center after-school programs and social studies classes.



^ Associate Curator of Education Kathrine Schlageck shares an arpillera from Peru donated by Sandy Bussing with children at Marlatt Elementary School during International Week. Students created their own arpilleras from paper scraps.

^ Homeschool Tuesday participants look at fabric and print blocks from India provided by Sandy Bussing and other donors and then use printing blocks to create their own designs. The items were also used at International Night at Ogden Elementary School.



^ Pottery making inspired by a collection of Southwest Pueblo ceramics donated by Mel and Mary Cottom

^ Children at the Boys and Girls Club at Theodore Roosevelt Elementary School try on clothing from Ghana donated by Warren and Nancy Prawl and balance a Botswana basket donated by Chuck and Sandy Bussing. African art objects are also taken annually to Anthony Middle School as part of the 7th grade social studies curriculum.

**STAFF SPOTLIGHT**

I recently spoke with Museum Specialist Nate McClendon as he worked on one of his video portrait installations. I learned how his interests and academic work experiences relate to his current role in the museum. The questions and responses below are excerpted from our conversation.

— Jui Mhatre, *Communications and Marketing Specialist*



Nate McClendon

**Before coming to work at the museum, was there a job or other experience that you feel prepared you well for this work?**

I spent over twenty years in public education teaching band and orchestra in Las Vegas and here in Manhattan. It taught me to focus on what people need, how to get them there, and what obstacles must be overcome. Teaching music specifically allowed me to engage in bigger-picture concepts, exploring humanity rather than just form and technique. All of this influences my work at the Beach.

**What recent project has been satisfying for you personally and why?**

Ten years ago, my daughter passed away. This past summer, I finally finished writing and published my first book, *The Emerging You* (available through *Amazon.com*). The book provides a new understanding of trauma and grief and how it transforms your life and person. I also hope it provides an insight that will allow people to better understand and support people they know who are experiencing grief.

**Is there an upcoming project or exhibition that you especially look forward to?**

Last year we debuted *Manhattan Community Portrait* at the museum and in various locations around town. This year, KSUnite has made this project central to its yearly mission, so we're focusing on recording the people of Kansas State University and sharing their stories throughout the campus. This includes the Olathe and Salina campuses. I'm excited to share that *KSU Community Portrait* was on exhibit at the Kemper Art Gallery in the K-State Student Union. Thirty new portraits were featured on six display screens through January 2025. *Manhattan Community Portrait* continues to be on exhibit and updated at the Beach Museum.



## FRIENDS OF THE BEACH MUSEUM OF ART



Alison E. Wheatley

### Art-felt spring greetings to all!

I hope you have visited the museum several times in recent months, enjoying the new exhibitions, talks and tours, and many social events. The 2024 Winter Party filled the UMB Theater with dozens of families creating holiday decorations. There's always something exciting happening at the Beach!

The core group of the Friends of the Beach Museum of Art is now the Membership Committee and is folded into the museum's Advisory Council structure, along with the Finance and Collection Committees. As the chair of our committee, I attended the Advisory Council meeting on November 7, headed by its chair, Margaret Chen, who joined us from Boston, MA. David Weaver of the Finance Committee

provided a positive report about the museum budget and Dick Seaton advised about purchases. Director Kent Smith reported positively about the increase in new visitors, contributors, and Friends. He also reported about the success of the second annual fundraiser, Beach Ball, held on October 18; it had new attendees and a 500% increase in underwriting. We hope you enjoyed that evening!

Among the many benefits you receive for your financial support of the museum is the designation of being an official Friend of the Beach Museum of Art! As a Friend, you help keep this museum free for all — visitors from campus, local schools, Riley County, and beyond. Not all museums can boast this kind of access. You are also invited to four annual Friends Gatherings, each including a welcoming wine and cheese reception and a talk that boosts your knowledge of the museum and its offerings.

At the last gathering on November 14, Kathrine Schlageck highlighted the recent educational events and tours. The Friends officers described the committees they are chairing: Larie Shoap, next year's Membership Committee Chair, talked about ways to attract new members; Jeff Sackrider, last year's chair, reported on the success of Beach Ball; Secretary, Linda Knupp, described the work on The Meadow; and Deputy Chair Marlene VerBrugge, invited members to join her in planning the best-ever Friends Annual Meeting and Reception in May. Please contact me or any of the officers to join in activities you would like to support.

I look forward to seeing you at one or more events in the coming year!

— Alison E. Wheatley  
Chair, Friends of the Beach Museum  
of Art Membership Committee

To renew or become a Friend and to see the Friends membership levels and benefits, please visit [beach.k-state.edu/friends](http://beach.k-state.edu/friends).



## 2024-2025 Advisory Council

Norman Akers  
Margaret Chen, *Chair*  
Tom Giller  
Mike Goss  
Shreepad Joglekar  
Don Lambert  
Michael McClure  
Bryan Pinkall  
Richard Seaton, *Collection Committee Chair*  
Lucas Shivers  
Mary Tolar  
David Weaver, *Finance Committee Chair*  
Mindy Weaver  
Alison Wheatley, *Friends of the Beach  
Membership Committee Chair*  
Fran Willbrant

### Ex Officio:

Marshall Stewart, *Executive VP for External  
Engagement and Chief of Staff*  
Evan Jones, *K-State Foundation*  
Kent Michael Smith, *Museum Director*  
Robin Lonborg, *Museum Deputy Director*  
Jennifer Harlan, *Museum Programs and  
Events Specialist*

### Collection Committee

Norman Akers  
Dick Anderson  
Gloria Anderson  
Shirley Baker  
Carole Chelz  
Mary Lee Graham  
Shreepad Joglekar  
Don Lambert  
Mike Michaelis  
Larry Peters  
Patty Reece  
Richard Seaton, *Committee Chair*  
Barbara Waterman-Peters

### Finance Committee

Margaret Chen  
David Weaver, *Committee Chair*  
Mark Knackendoffel  
Fran Willbrant

## Friends of the Beach Museum of Art Membership Committee

Linda Knupp, *Secretary*  
Jeff Sackrider, *Past Chair*  
Larie Schoap, *Upcoming Chair*  
Marlene VerBrugge, *Deputy Chair*  
Alison Wheatley, *Chair*

John L. Doyle, *The Bride's Dance* (detail)  
1978, color lithograph, 18 x 26 1/8 in.,  
gift of Phillip and Linda Enegren, 2017.3zz



## Thank you to our 2024–2025 Exhibition and Program Sponsors

### Major Sponsors

Greater Manhattan Community Foundation's Lincoln & Dorothy I. Deihl Community Grants Program

Friends of the Beach Museum of Art

### Sustaining Sponsors

Dan and Beth Bird

### Contributing Sponsors

David and Judith Regehr

### Media Sponsor

Radio Kansas

## Love Art? Support an exhibition and its programs!

Businesses or individuals who sponsor specific exhibitions and programs receive valuable public recognition. Please contact Director Kent Michael Smith at [kentmsmith@ksu.edu](mailto:kentmsmith@ksu.edu) for details.



A view of the exhibition  
*Return to Prairie: Textiles for Green Burial Awareness*

A view of the exhibition  
*Printing Beyond Borders: Contemporary Indian Prints at Kansas State University*



RECENT ACQUISITION



Roger Y. Shimomura, *Guardian*  
2020-2023, acrylic on canvas,  
36 x 44 7/8 in., 2023.18