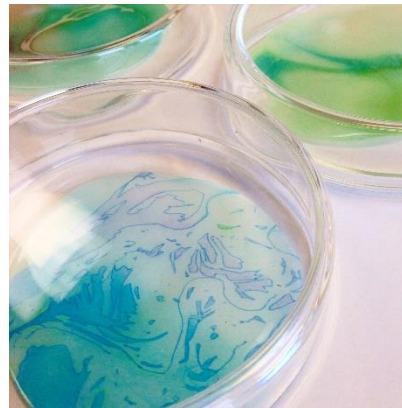


SCHOOL TOURS – ALL GRADE LEVELS

2018 Friends of the Beach Museum of Art Gift Print artist Lynn Benson has devoted her career to studying how human activity has affected a vitally important resource: water. In a wide range of mediums, she represents bodies of water implicated in environmental and political struggles.

Students will investigate works by additional Kansas artists, including Herschel Logan and photographer Jim Richardson, from the museum’s permanent collection related to water, think about Kansas water issues and the environment, and learn more about Kansas waterways above and below ground.

Discussions will address environmental science standard K-ESS3



“I want to be a part of the conversation as we face enormous change and challenges on a global scale related to our waters.”

Lynn Benson



Tours are free, available Tuesday-Friday, last 1½ hours. Bus funds are available.

Contact: Kathrine Schlageck, Senior Educator, at klwalk@ksu.edu or 785.532.7718

Bus funds are provided by individual and private foundation donations, not government funding.

To financially support the bus fund and/or education programs, contact Kathrine Schlageck.

Featured art – Lynn Benson, *Kansas City 1951* and *Drops in Petrie Dishes*; Jim Richardson, *Kansas Resinweed*.